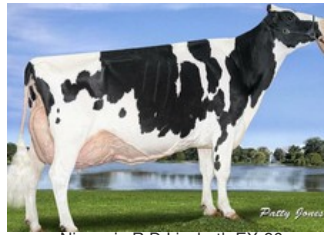


Acme Star Lilly EX-94



Nipponia R D Lizbeth EX-96



Nipponia R D Lizbeth EX-96



4 EX daughters Nipponia R D Lizbeth



Nipponia R D Lizbeth EX-96

Alleyoop x EX-96 Dundee x EX-91 Lee x EX-94 Starbuck x VG-88 Mark Anthony x VG-85 Sheik

Meerdere EX-halfzussen!

Kalft eind januari/begin februari

GENOMICS

Genomic index USA: **+1869 GTPI** (2024-04)

|            |          |          |           |       |     |         |
|------------|----------|----------|-----------|-------|-----|---------|
| Productie  | 570 M    | -0.14%V  | -0.04%E   | -18 V | 7 E | -263 NM |
| Gezondheid | -2.7 PL  | 3.21 SCS | -3.6 DPR  |       |     |         |
| Exterieur  | 1.47 UDC | 0.89 F&L | 2.32 PTAT |       |     |         |

AFSTAMMING

