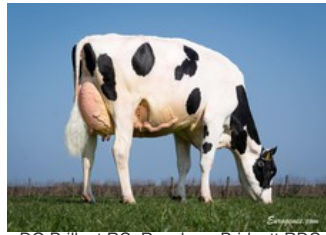




Ms DG Delta Bridgett RDC EX-93



DG Brillant RC, Resolve x Bridgett RDC



Rainyridge Super Beth RDC VG-86



Calbrett Supersire Barb RDC VG-86



Rainyridge Talent Barbara RDC EX-95

Perfect x VG-86 Nacash x Marquee x EX-93 Delta x VG-86 Supersire x VG-86 Superstition x EX-95 Talent x EX-95 Outside x EX Milan x EX-94 Tony

GENOMICS

Genomic index USA: **+2938 GTPI** (2024-04)

Productie	1226 M	0.15%V	0.07%E	91 V	60 E	845 NM
Gezondheid	+4.3 PL	2.92 SCS	-0.8 DPR			
Exterieur	1.75 UDC	0.96 F&L	2.00 PTAT			

Genomic index NLD: **+208 GNVI** (2023-12; ZB)

Productie	1357 M	0.15%V	0.05%E	73 V	52 E	390 INET
Gezondheid	335 LVD	99 UGH	100 CGT	103 VRU		
Exterieur	104 FR	106 RB	105 UI	98 BE	104 TOT	

AFSTAMMING

