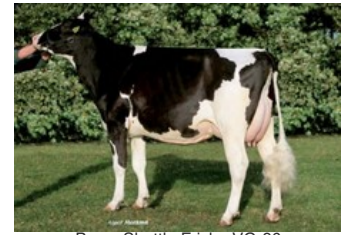




Rhala Excellent Flower VG-89



Bouw Goli Flower VG-87



Bouw Shottle Frisby VG-86



Ralma Durham Frisky VG-88



Ralma Juror Faith EX-91

Nippon P x Jacuzzi-Red x VG-89 Balisto x VG-87 Goli x EX-90 Goldwyn x VG-86 Shottle x VG-88 Durham x EX-91 Ked Juror x VG-89 Leadman x Melwood

GENOMICS

Genomic index NLD: **+258 GNV** (2023-08; ZB)

Productie	1470 M	-0.11%V	0.25%E	51 V	77 E	444 INET
Gezondheid	377 LVD	103 UGH	106 CGT	100 VRU		
Exterieur	101 FR	100 RB	105 UI	102 BE	104 TOT	

AFSTAMMING

