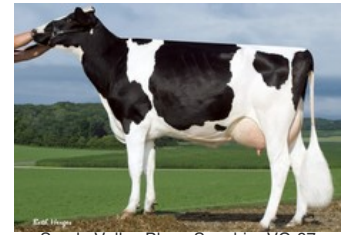




Alida ET VG-86



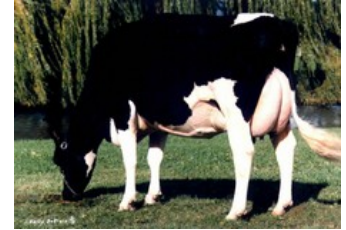
Sandy-Valley IO Amethyst VG-87



Sandy-Valley Plane Sapphire VG-87



Sandy-Valley Bolt Sheila EX-92



Snow-N Denises Dellia EX-95

Gladius x Bali x VG-86 Gymnast x VG-86 Supershot x VG-85 McCutchen x VG-87 Altalota x VG-87 Planet x EX-92 Bolton x VG-87 Forbidden x VG-89 BW Marshall

Extreem hoge RZG kalf, kalft mei 2024

GENOMICS

Genomic index DEU: **+154 GRZG** (2024-04)

Productie	300 M	0.52%V	0.22%E	66 V	33 E	132 RZM
Gezondheid	130 RZN	126 RZS	115 RZR	130 RZGes	2272 RZ€	
Exterieur	101 KÖR	104 MTY	107 EUT	125 FUN	119 RZE	

Genomic index USA: **+2882 GTPI** (2024-04)

Productie	1061 M	0.14%V	0.08%E	81 V	55 E	935 NM
Gezondheid	+5.6 PL	2.61 SCS	+1.0 DPR			
Exterieur	0.80 UDC	0.87 F&L	0.62 PTAT			

Genomic index NLD: **+358 GNV** (2024-04; ZB)

Productie	875 M	0.46%V	0.16%E	82 V	46 E	373 INET
Gezondheid	911 LVD	111 UGH	110 CGT	107 VRU		
Exterieur	94 FR	98 RB	104 UI	96 BE	98 TOT	

AFSTAMMING

