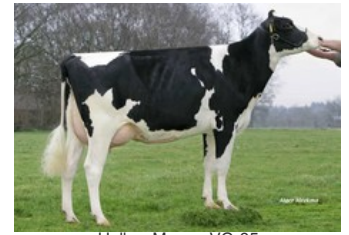




Lakeside Ups Red Range VG-86



De Oosterhof Dg Rose RDC VG-89



Holbra Manoa VG-85



Holbra Mascol Pam VG-87



Sunday ALH Prudence VG-88

Sputnik RDC x VG-85 Swingman Red x VG-86 Salvatore Rc x VG-89 Rubicon x GP-83 Aikman RDC x VG-85 Man-O-Man x VG-87 Mascol x VG-88 Durham x EX-90 Rudolph x EX-95 Chief Mark

GENOMICS

Genomic index DEU: **+149 GRZG** (2024-04)

Productie	1904 M	-0.25%V	-0.16%E	49 V	48 E	135 RZM
Gezondheid	127 RZN	122 RZS	116 RZR	124 RZGes	2241 RZ€	
Exterieur	96 KÖR	117 MTY	107 EUT	103 FUN	109 RZE	

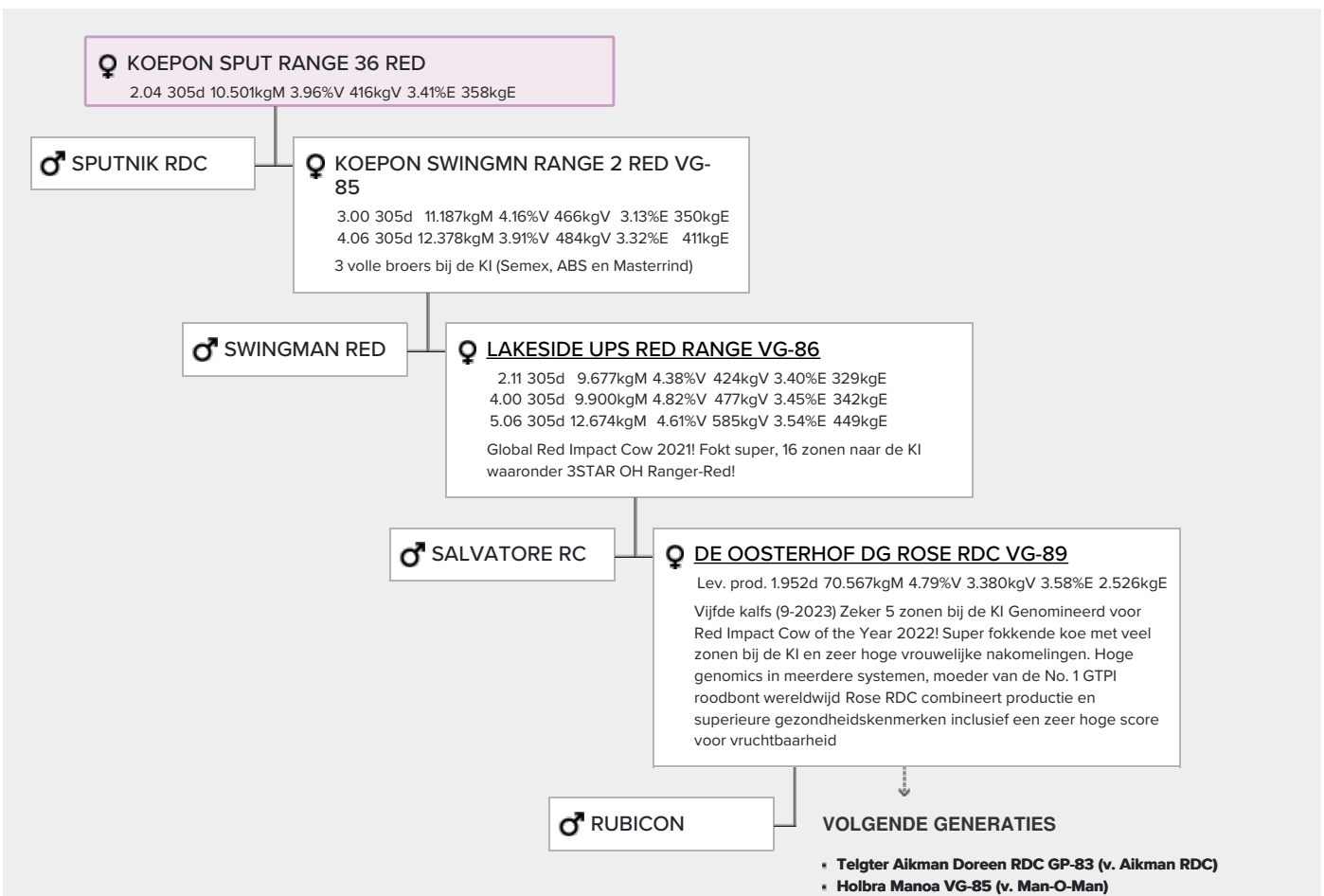
Genomic index USA: **+2707 GTPI** (2024-04)

Productie	1480 M	-0.04%V	-0.02%E	46 V	40 E	824 NM
Gezondheid	+7.0 PL	2.61 SCS	+0.7 DPR			
Exterieur	0.84 UDC	0.57 F&L	0.54 PTAT			

Genomic index NLD: **+302 GNV** (2023-04; RB)

Productie	2162 M	-0.44%V	-0.18%E	51 V	59 E	380 INET
Gezondheid	568 LVD	105 UGH	109 CGT	108 VRU		
Exterieur	99 FR	98 RB	106 UI	97 BE	101 TOT	

AFSTAMMING



- **Holbra Pam VG-87 (v. Mascol)**
Lev.prod.: 2062d 73,468kgM 4,46%V 3274kgV 3,57%E 2620kgE
- **Sunday ALH Prudence VG-88 (v. Durham)**
- **Mayerlane-DK Hiawatha EX-90 (v. Rudolph)**
- **Golden-Oaks Mark Prudence EX-95 (v. Chief Mark)**
Volgende moeder EX-91 Sexation x EX-93 Elevation x EX-94
Highmark x EX-91 Bootmaker Lee x EX-90 Mingo x VG-85 Star
Man x VG-86 Rag Apple