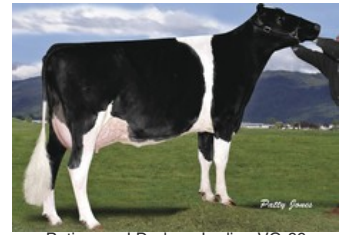




Southland Silvy Lucy EX-90



Calbrett Shottle Lucy EX-94



Petinesca-I Durham Ladina VG-89



Savage-Leigh Bellwood Linda EX-92



Savage-Leigh Leona EX-96

EX-90 Silver x VG-86 AltaOak x VG-86 Dorcy x EX-93 Goldwyn x EX-94 Shottle x VG-89 Durham x EX-92 Bellwood x VG-87 Blackstar x EX-90 Glenview Joe

One of the first **Excellent Seagull-Bay Silver**-daughters in the Netherlands

From the phenomenal **Savage-Leigh BW Linda EX-92** family!

Same family as **Savage-Leigh Leona EX-96**, **Savage-Leigh Licorice EX-92** and the **Italian National Champion in 2017 DKR Lexi EX-96**

GENOMICS

Genomic index USA: **+2265 GTPI** (2024-04)

Production	1013 M	0.01%F	0.00%P	43 F	31 P	221 NM
Health	-1.0 PL	2.94 SCS	-4.9 DPR			
Type	1.44 UDC	0.83 F&L	1.61 PTAT			

PEDIGREE

