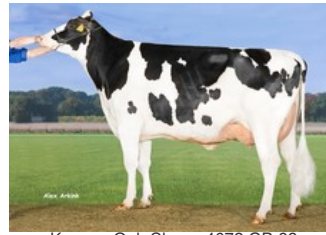




Drouner K&L Claxima 1706 GP-82



Koepon Oak Classy 4672 GP-83



Koepon Shot Classy 17 VG-85



Koepon Classy VG-86



Same family: Cogent Supershot

Enclave x GP-82 Brave x GP-82 Soundcloud x GP-83 Imax x Silver x GP-83 AltaOak x VG-85 Man-O-Man x VG-85 Shottle x VG-86 Simon x VG-86 Merrill

Wilra SSI Regal Enclave daughter with stunning NVI-score and BB + A2A2

GENOMICS

Genomic index DEU: **+152 GRZG** (2024-04)

Production	1121 M	0.33%F	0.09%P	82 F	49 P	143 RZM
Health	124 RZN	117 RZS	110 RZR	120 RZGes	2306 RZ€	
Type	91 KÖR	99 MTY	123 EUT	97 FUN	112 RZE	

Genomic index NLD: **+361 GNVl** (2024-04; B&W)

Production	2128 M	-0.03%F	-0.06%P	87 F	67 P	487 INET
Health	848 LVD	108 UGH	109 CGT	105 VRU		
Type	93 FR	95 RB	109 UI	98 BE	101 TOT	

PEDIGREE

