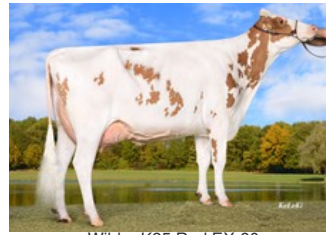




K&L SK Konzert Red VG-89



Wilder K25 Red EX-90



Wilder Kanu 111 RDC VG-88



Wilder Kairo 55 RDC VG-89



Baymax Red, Bagno x K25 Red EX-90

Louis P-red x GP-83 Percey-Red x VG-89 Silky Red x Battlecry x EX-90 Brekem RDC x VG-88 Snowman x VG-89 Shottle x VG-88 Ramos x GP-84 Danube-Red

GENOMICS

Genomic index DEU: **+147 GRZG** (2024-04)

Production	1467 M	0.04%F	0.01%P	64 F	52 P	140 RZM
Health	114 RZN	110 RZS	113 RZR	119 RZGes	2062 RZE	
Type	105 KÖR	112 MTY	99 EUT	123 FUN	116 RZE	

Genomic index NLD: **+295 GNVI** (2024-04; R&W)

Production	2011 M	-0.19%F	-0.11%P	70 F	61 P	426 INET
Health	580 LVD	103 UGH	106 CGT	104 VRU		
Type	94 FR	102 RB	105 UI	102 BE	102 TOT	

PEDIGREE

