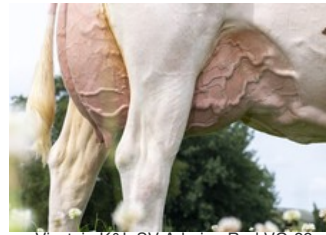




Kamps-Hollow Durham Altitude EX-95



Visstein K&L SV Aderina Red VG-89



Willsbro K&L Nugget Aderyn RDC VG-87



KHW Super Aderyn RC EX-90



D-R-A August EX-96

Ridercup x VG-86 Rubels-Red x VG-89 Salvatore Rc x VG-87 Nugget RDC x VG-85 Supersire x EX-90 Superstition x EX-91 Goldwyn x EX-95 Durham x EX-93 Prelude x EX-94 Jubilant RF

One out of four Ridercup daughters of Ardiana Red

GENOMICS

Genomic index DEU: **+143 GRZG** (2024-04)

Production	903 M	0.23%F	0.06%P	62 F	37 P	133 RZM
Health	115 RZN	119 RZS	102 RZR	113 RZGes	1591 RZ€	
Type	109 KÖR	114 MTY	126 EUT	114 FUN	133 RZE	

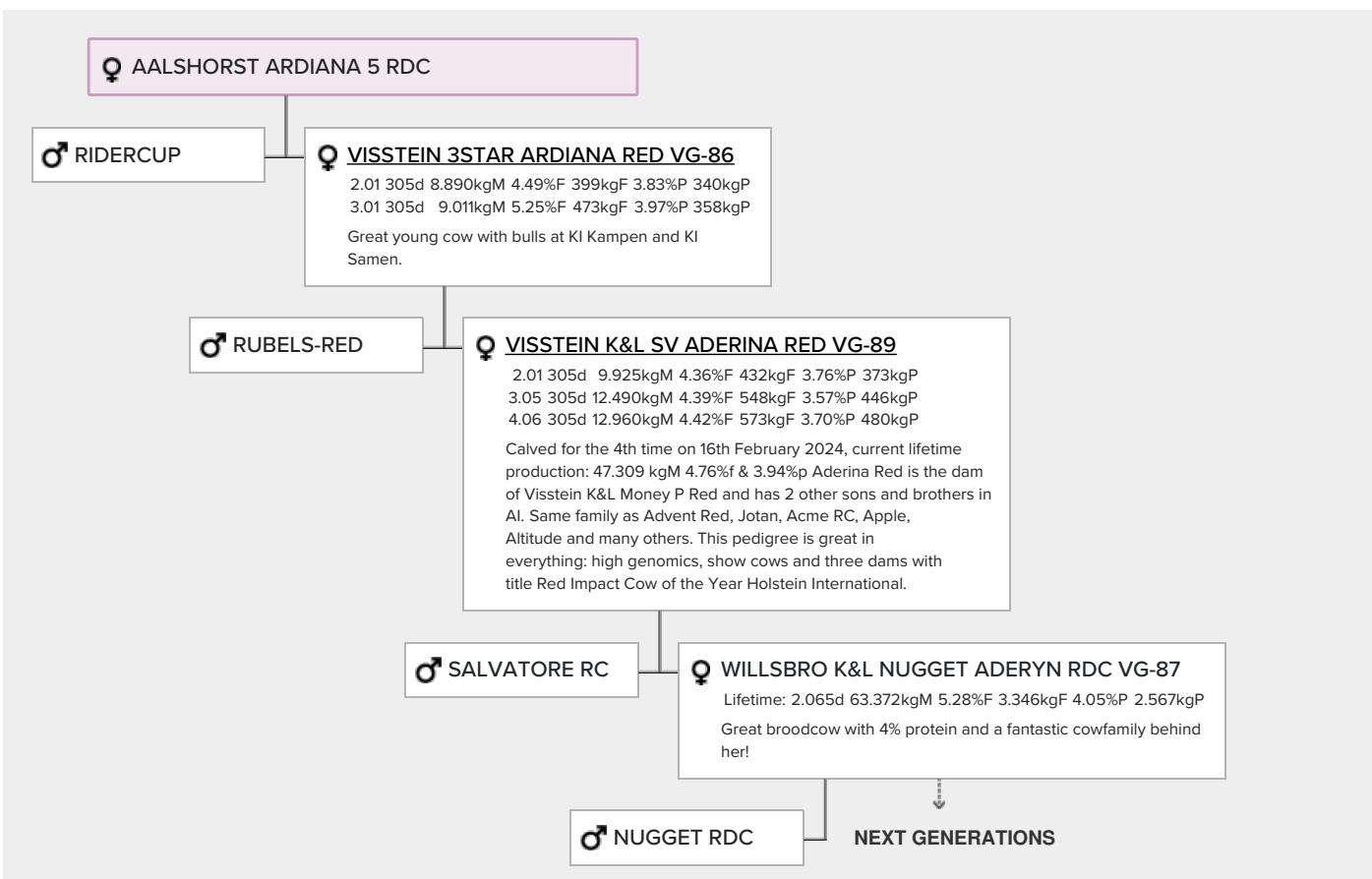
Genomic index USA: **+2769 GTPi** (2024-04)

Production	1225 M	0.09%F	0.05%P	73 F	54 P	753 NM
Health	+4.0 PL	2.81 SCS	-2.2 DPR			
Type	1.68 UDC	0.93 F&L	1.93 PTAT			

Genomic index NLD: **+232 GNVi** (2024-04; B&W)

Production	1257 M	0.20%F	0.05%P	74 F	49 P	378 INET
Health	414 LVD	102 UGH	105 CGT	101 VRU		
Type	101 FR	106 RB	111 UI	102 BE	108 TOT	

PEDIGREE



- **Willsbro K&L Supersire Aderyn VG-85 (s. Supersire)**
Full sister to the No. 1 proven bull in the UK Willsbro Atwork RDC
- **KHW Super Aderyn RDC EX-90 (s. Superstition)**
Red Impact Cow of the Year 2018 Holstein International
- **KHW Goldwyn Aiko RDC EX-91 (s. Goldwyn)**
Former Red Impact Cow of the Year Holstein International
- **Kamps-Hollow Durham Altitude RDC EX-95 (s. Durham)**
Dam to Advent-Red, Jotan-Red & Acme RC
- **Clover-Mist Alisha RDC EX-93 (s. Prelude)**
- **Clover-Mist Augy Star RDC EX-94 (s. Jubilant RF)**