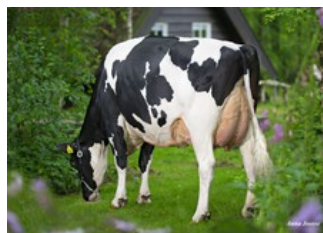




Lakeside Ups Red Range VG-86



De Oosterhof Dg Rose RDC VG-89



Holbra Mascol Pam VG-87



Sunday ALH Prudence VG-88



Mayerlane-DK Hiawatha EX-90

FrisbeeRDC x VG-86 AltaTop-Red x VG-86 Salvatore Rc x VG-89 Rubicon x GP-83 Aikman RDC x VG-85 Man-O-Man x VG-87 Mascol x VG-88 Durham x EX-90 Rudolph x EX-95 Chief Mark

- Granddaughter to the Red Impact Cow: Red Range!
- Stunning scores for NVI & RZG
- Red Frisbee RDC with great components

GENOMICS

Genomic index DEU: **+151 GRZG** (2024-04)

Production	1124 M	0.30%F	0.10%P	77 F	49 P	142 RZM
Health	115 RZN	118 RZS	101 RZR	124 RZGes	2114 RZ€	
Type	112 KÖR	120 MTY	114 EUT	109 FUN	124 RZE	

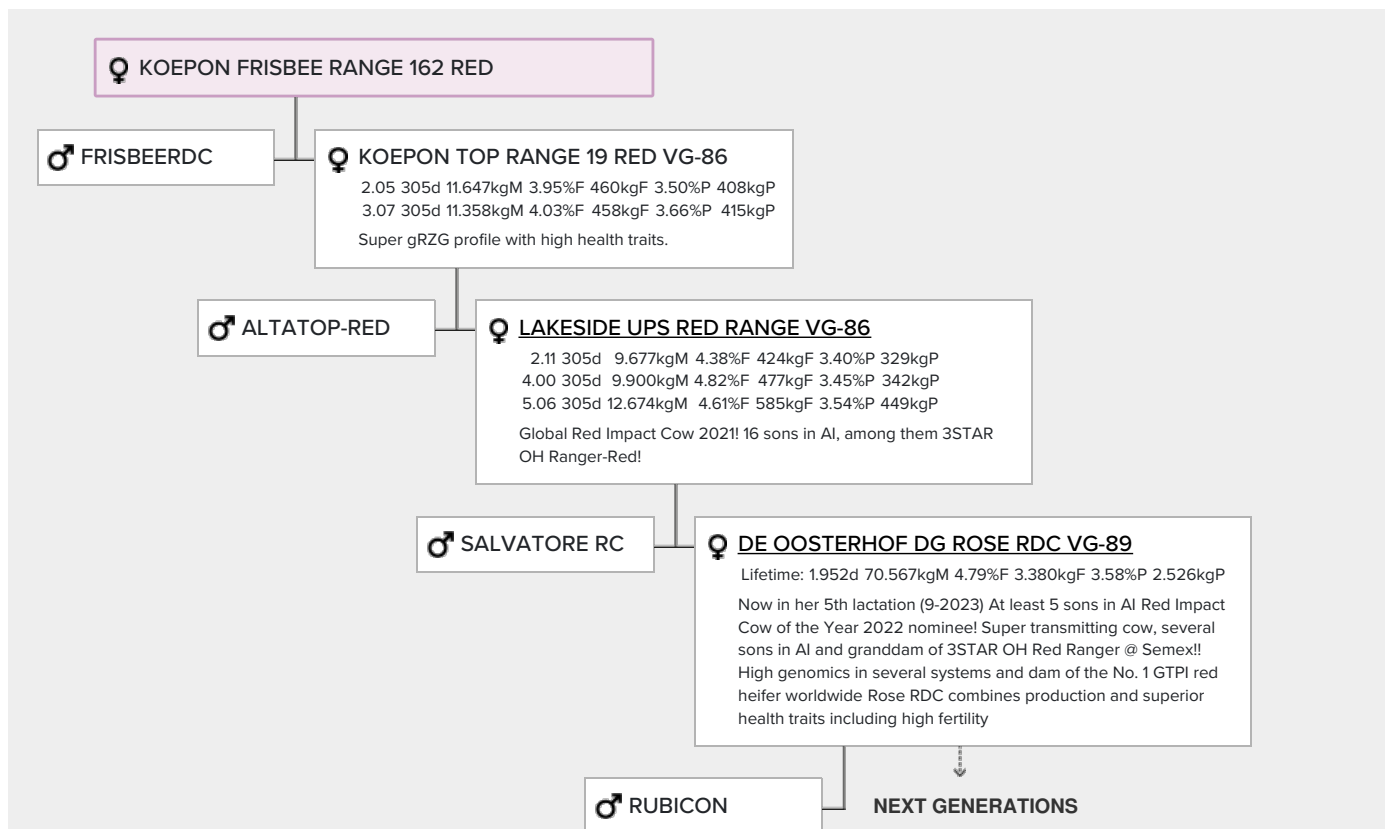
Genomic index USA: **+2663 GTPI** (2024-04)

Production	700 M	0.17%F	0.08%P	75 F	44 P	697 NM
Health	+3.6 PL	2.79 SCS	-1.6 DPR			
Type	0.91 UDC	0.56 F&L	1.07 PTAT			

Genomic index NLD: **+286 GNV** (2024-04; R&W)

Production	1682 M	0.13%F	-0.03%P	88 F	57 P	441 INET
Health	926 LVD	105 UGH	107 CGT	101 VRU		
Type	101 FR	103 RB	107 UI	100 BE	104 TOT	

PEDIGREE



▪ **Telgter Aikman Doreen RDC GP-83 (s. Aikman RDC)**

▪ **Holbra Manoa VG-85 (s. Man-O-Man)**

▪ **Holbra Pam VG-87 (s. Mascol)**

Lifetime: 2062d 73.468kgM 4.46%F 3274kgF 3.57%P 2620kgP

▪ **Sunday ALH Prudence VG-88 (s. Durham)**

▪ **Mayerlane-DK Hiawatha EX-90 (s. Rudolph)**

▪ **Golden-Oaks Mark Prudence EX-95 (s. Chief Mark)**

Next dam EX-91 Sexation x EX-93 Elevation x EX-94 Highmark x
EX-91 Bootmaker Lee x EX-90 Mingo x VG-85 Star Man x VG-86
Rag Apple