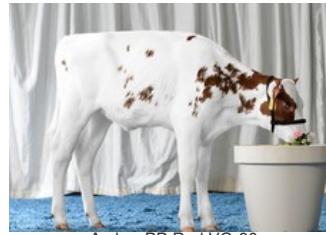




Amber PP Red VG-86



Amber PP Red VG-86



Teemar Observer Airline VG-85



Dixie-Lee Adrielle-ET VG-85



Dixie-Lee Aspen EX-92

Freestyle-Red x VG-86 Solitair P Red x VG-85 Abi Red PP x VG-87 Powerball-P x VG-86 Snow RF x VG-85 Observer x VG-88 Shottle x VG-87 O Man x VG-86 BW Marshall x VG-85 Tesk Terry

- Polled and direct daughter of the famous bullmother Amber PP Red with excellent type!
- Maternal sister to Tirsvad 3STAR Member PP Red.
- Just fresh (1-2024)!

GENOMICS

Genomic index DEU: **+144 GRZG** (2024-04)

Production	798 M	0.00%F	0.06%P	32 F	33 P	124 RZM
Health	120 RZN	121 RZS	113 RZR	121 RZGes	1637 RZE	
Type	102 KÖR	112 MTY	126 EUT	116 FUN	130 RZE	

Genomic index NLD: **+316 GNVI** (2023-12; R&W)

Production	1774 M	-0.25%F	-0.13%P	54 F	51 P	345 INET
Health	979 LVD	106 UGH	105 CGT	107 VRU		
Type	97 FR	103 RB	111 UI	98 BE	104 TOT	

PEDIGREE

