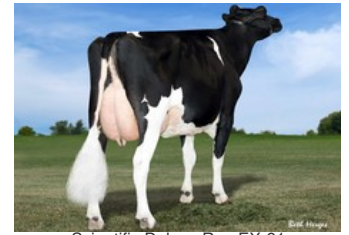




Kemelia V/H Zomerbloemhof VG-87



Co-Vista Atwood Desire EX-90



Scientific Deluxe Rae EX-91



Scientific Debutante Rae EX-92



C Glenridge Citation Roxy EX-97

German Boy x VG-89 Topnotch x VG-89 Legendary x VG-87 Rubicon x Numero Uno x EX-90 Atwood x EX-91 Shottle x EX-92 Durham x EX-90 Jubilant RF x EX-96 Tony

GENOMICS

Genomic index DEU: **+139 GRZG** (2024-04)

Production	784 M	0.29%F	-0.06%P	63 F	20 P	125 RZM
Health	119 RZN	125 RZS	109 RZR	114 RZGes	1531 RZE	
Type	106 KÖR	112 MTY	122 EUT	114 FUN	127 RZE	

Genomic index USA: **+2694 GTPI** (2024-04)

Production	925 M	0.16%F	0.01%P	82 F	32 P	677 NM
Health	+4.1 PL	2.67 SCS	-0.6 DPR			
Type	1.11 UDC	0.62 F&L	0.91 PTAT			

Genomic index NLD: **+239 GNV** (2023-08; B&W)

Production	1713 M	0.15%F	-0.21%P	89 F	37 P	364 INET
Health	337 LVD	103 UGH	109 CGT	105 VRU		
Type	100 FR	102 RB	104 UI	98 BE	101 TOT	

PEDIGREE

