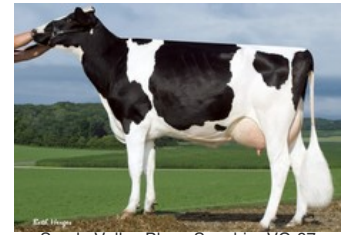




Alida ET VG-86



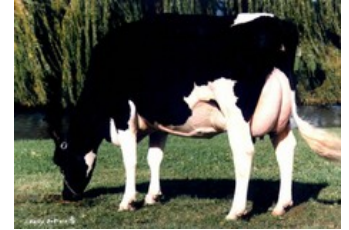
Sandy-Valley IO Amethyst VG-87



Sandy-Valley Plane Sapphire VG-87



Sandy-Valley Bolt Sheila EX-92



Snow-N Denises Dellia EX-95

Dayne x Bali x VG-86 Gymnast x VG-86 Supershot x VG-85 McCutchen x VG-87 Altalota x VG-87 Planet x EX-92 Bolton x VG-87 Forbidden x VG-89 BW Marshall

- By far the no. 1 daughter of the American top sire Peak Dayne.
- High components combined with great health traits and A2A2!
- Dam SPH Alberta is still the no. 1 daughter of De-Su Legend Bali and was topseller at the Zukunft Rind 2020 at € 21.000.

GENOMICS

Genomic index DEU: **+148 GRZG** (2024-04)

Production	363 M	0.44%F	0.24%P	61 F	38 P	133 RZM
Health	125 RZN	116 RZS	113 RZR	120 RZGes	2046 RZE	
Type	113 KÖR	100 MTY	113 EUT	104 FUN	116 RZE	

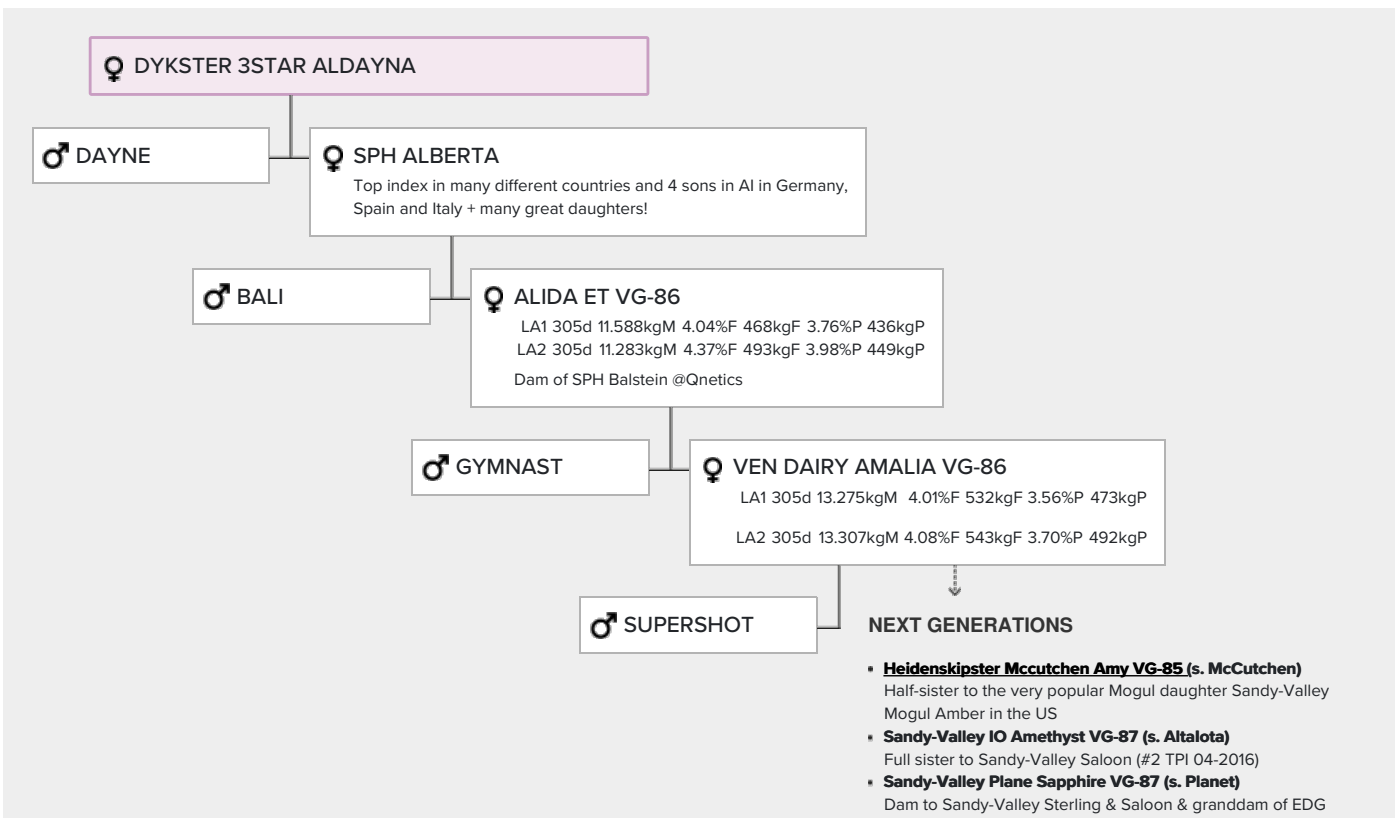
Genomic index USA: **+2808 GTPI** (2024-04)

Production	585 M	0.18%F	0.11%P	74 F	51 P	838 NM
Health	+5.2 PL	2.68 SCS	+0.1 DPR			
Type	0.98 UDC	0.60 F&L	0.77 PTAT			

Genomic index NLD: **+283 GNV** (2022-04; B&W)

Production	1087 M	0.32%F	0.24%P	78 F	62 P	432 INET
Health	576 LVD	103 UGH	110 CGT	104 VRU		
Type	102 FR	102 RB	109 UI	100 BE	106 TOT	

PEDIGREE



Rubicon! Most prominent foundation dam in the American top
200 gTPI sire list of 4-2023

- **Sandy-Valley Bolt Sheila EX-92 (s. Bolton)**
- **Sandy-Valley Forbid Sully VG-87 (s. Forbidden)**
- **Orthoapple Marshall Alia VG-89 (s. BW Marshall)**