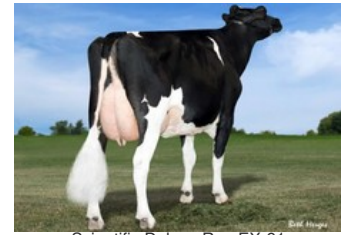




Kemelia V/H Zomerbloemhof VG-87



Co-Vista Atwood Desire EX-90



Scientific Deluxe Rae EX-91



Hanoverhill Tony Rae EX-96



C Glenridge Citation Roxy EX-97

Bennie x VG-89 Topnotch x VG-89 Legendary x VG-87 Rubicon x Numero Uno x EX-90 Atwood x EX-91 Shottle x EX-92 Durham x EX-90 Jubilant RF x EX-96 Tony

GENOMICS

Genomic index DEU: **+148 GRZG** (2024-04)

Production	2127 M	-0.07%F	-0.13%P	76 F	56 P	145 RZM
Health	116 RZN	109 RZS	106 RZR	114 RZGes	2126 RZ€	
Type	108 KÖR	120 MTY	109 EUT	109 FUN	119 RZE	

Genomic index USA: **+2847 GTPI** (2024-04)

Production	1934 M	0.01%F	0.00%P	78 F	61 P	907 NM
Health	+6.0 PL	2.78 SCS	-1.4 DPR			
Type	1.37 UDC	0.03 F&L	1.28 PTAT			

Genomic index NLD: **+248 GNV** (2024-04; B&W)

Production	2287 M	-0.31%F	-0.23%P	62 F	54 P	370 INET
Health	517 LVD	104 UGH	104 CGT	103 VRU		
Type	100 FR	104 RB	108 UI	99 BE	104 TOT	

PEDIGREE

