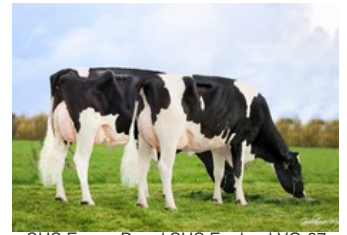




SHS Electra GP-83



SHS England VG-87



SHS Emma P and SHS England VG-87



SHS England VG-87



Broekhuis RUW Elite VG-86

GP-83 Vh Crown x VG-87 Cameron x VG-86 Barclay x Molotov x GP-83 Shamrock x VG-85 Man-O-Man x VG-88 Colby x VG-87 Augustine x VG-85 Ramos x VG-88 Manfred

VH Crown from the Welcome Augustine Wanda VG-87 cow family with a tremendous RZG profile! Due end of November 2022

AI sires Welcome Radon & Welcome Shamrock Windsor, full brother from Electra her 4th dam are descending from this cow family too.

Besides Electra her nice scores for NVI & RZG, she also shows an amazing 5048 gICO (1-2021). Full sister to SHS Clapton @RBW

GENOMICS

Genomic index DEU: **+136 GRZG** (2024-04)

Production	668 M	0.15%F	0.07%P	43 F	31 P	125 RZM
Health	115 RZN	117 RZS	102 RZR	114 RZGes	1420 RZ€	
Type	97 KÖR	111 MTY	112 EUT	123 FUN	122 RZE	

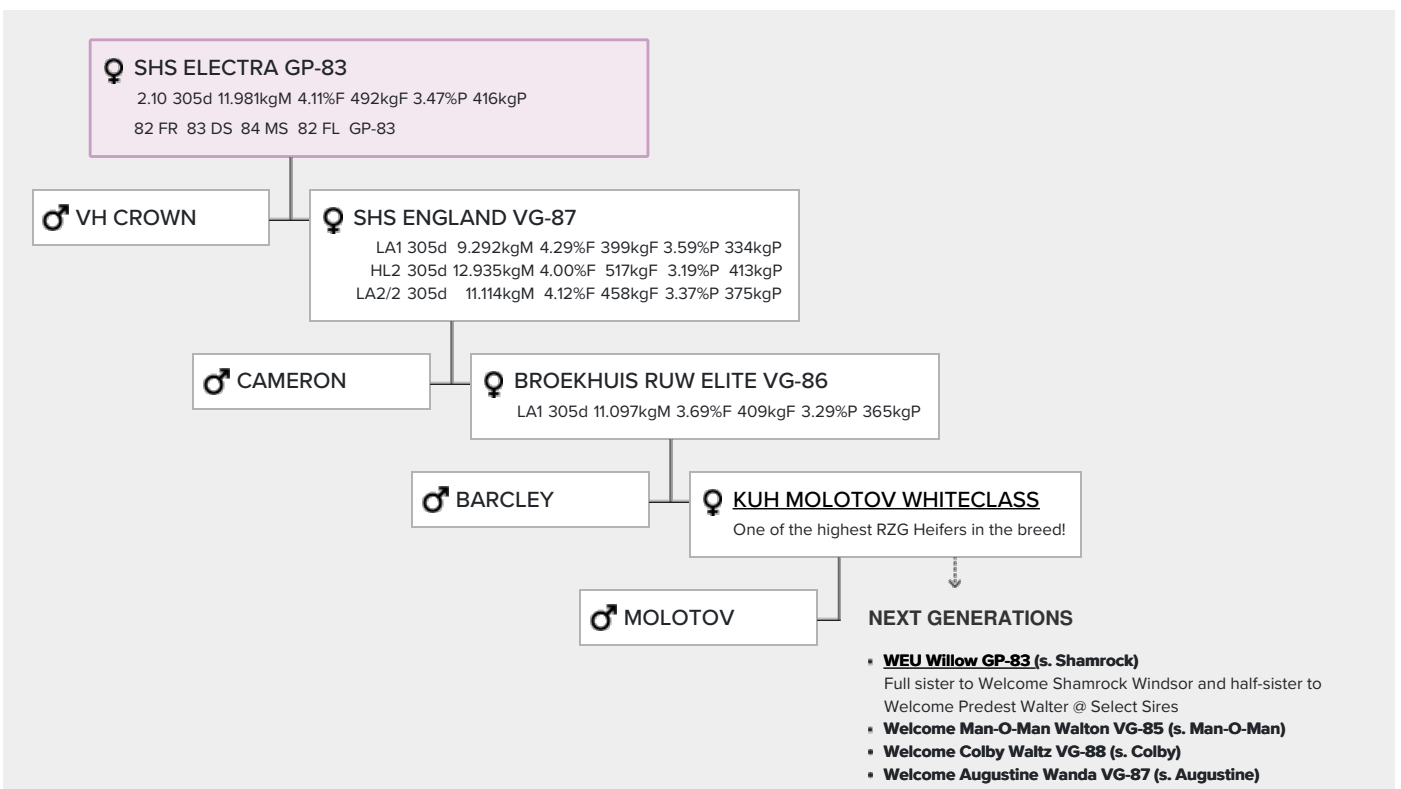
Genomic index USA: **+2680 GTPI** (2024-04)

Production	852 M	0.12%F	0.07%P	68 F	46 P	700 NM
Health	+3.3 PL	2.75 SCS	0.0 DPR			
Type	0.73 UDC	0.89 F&L	0.27 PTAT			

Genomic index NLD: **+257 GNV1** (2022-12; B&W)

Production	1592 M	-0.22%F	-0.08%P	45 F	47 P	309 INET
Health	551 LVD	104 UGH	110 CGT	106 VRU		
Type	92 FR	101 RB	105 UI	103 BE	102 TOT	

PEDIGREE



- **Welcome Ramos Wilma VG-85 (s. Ramos)**
 - **Welcome Manfred Willa VG-88 (s. Manfred)**
- Dam of Welcome Radon