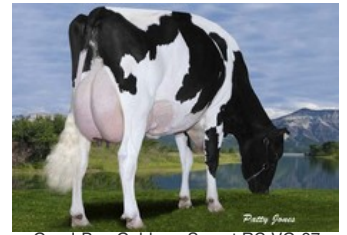




Schreur Serena 13 PP RDC VG-87



Schreur Serena 7 P VG-85



Gen-I-Beq Goldwyn Secret RC VG-87



Gen-I-Beq Durham Sherry VG-87



Glen Drummond Aero Flower VG-88

GP-82 Solitair P Red x VG-87 Apo Red PP x VG-85 Silver x GP-83 Earnhardt P x GP-82 Colt P x VG-85 Socrates x VG-87 Goldwyn x VG-87 Durham x VG-86 Formation x VG-88 Aerostar

GENOMICS

Genomic index DEU: **+133 GRZG** (2024-04)

Production	-10 M	0.54%F	0.21%P	50 F	19 P	121 RZM
Health	114 RZN	112 RZS	104 RZR	111 RZGes	1258 RZE	
Type	103 KÖR	111 MTY	122 EUT	110 FUN	124 RZE	

Genomic index NLD: **+211 GNVI** (2022-04; R&W)

Production	1113 M	0.28%F	0.02%P	76 F	42 P	348 INET
Health	486 LVD	100 UGH	108 CGT	100 VRU		
Type	98 FR	103 RB	114 UI	100 BE	107 TOT	

PEDIGREE

