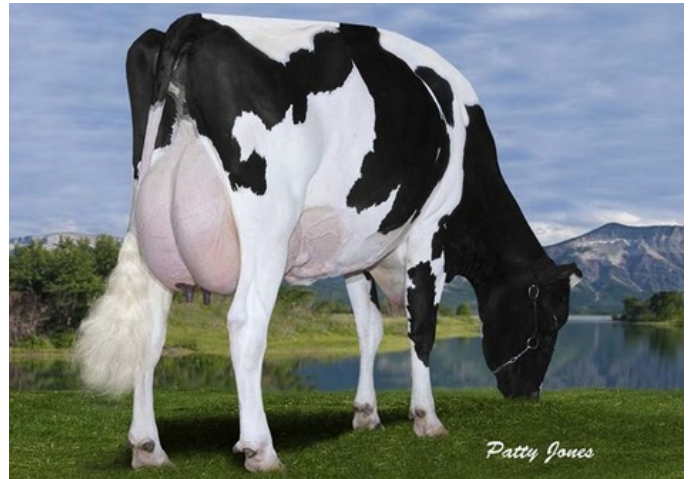




Gen-I-Beq Goldwyn Secret RC VG-87



Gen-I-Beq Goldwyn Secret RC VG-87

GP-84 Argus P Red x VG-85 Silver x GP-83 Earnhardt P x GP-82 Colt P x VG-85 Socrates x VG-87 Goldwyn x VG-87 Durham x VG-86 Formation x VG-88 Aerostar x EX Enhancer

High GRZG Argus daughter

From the Gen-I-Beq Goldwyn Secret / Glen Drummond Splendor family

High production and high fertility

GENOMICS

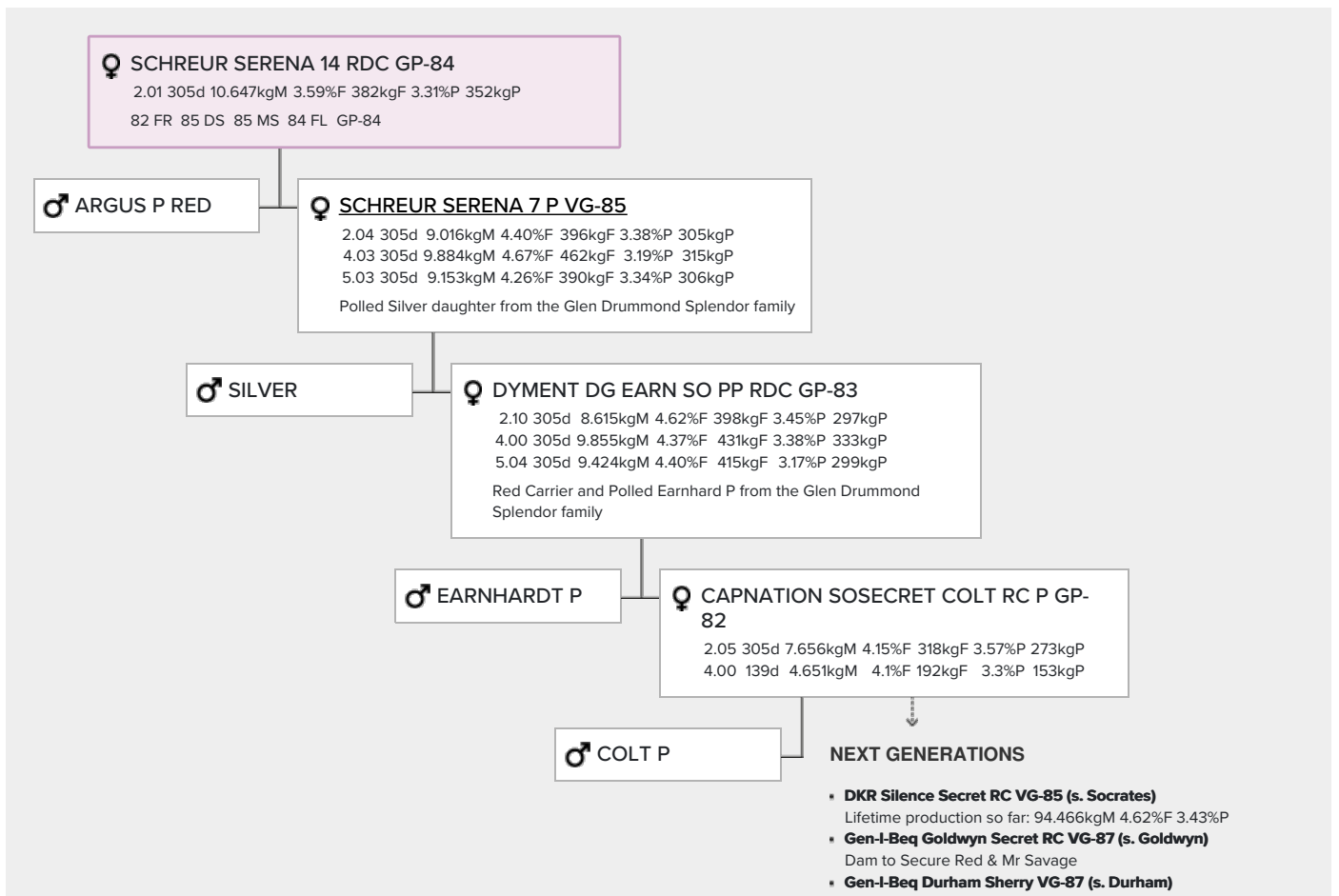
Genomic index DEU: **+120 GRZG** (2024-04)

Production	1124 M	-0.05%F	-0.09%P	39 F	28 P	123 RZM
Health	107 RZN	111 RZS	108 RZR	100 RZGes	983 RZE	
Type	101 KÖR	112 MTY	100 EUT	103 FUN	104 RZE	

Genomic index NLD: **+186 GNV** (2020-04; B&W)

Production	1936 M	-0.14%F	-0.18%P	67 F	48 P	364 INET
Health	318 LVD	100 UGH	105 CGT	102 VRU		
Type	100 FR	101 RB	101 UI	97 BE	99 TOT	

PEDIGREE



Granddam of the proven Red bull Schreur Laron P

- **Glen Drummond Splendor VG-86 (s. Formation)**
- **Glen Drummond Aero Flower VG-88 (s. Aerostar)**
x EX-CAN Enhancer x EX-2E-CAN Sir Christopher
- **Glen Drummond Shower EX (s. Enhancer)**