




# LOT: 880 - 5 EMBRYOS HM PIRELLI X 3STAR OH SANDRA PP RE

|   |   |   |   |
|---|---|---|---|
| <b>LOT: 880</b>   |   | <b>5 EMBRYOS HM PIRELLI X 3STAR OH SANDRA PP RED</b>                      |   |
| <b>5 embryos</b>  | <b>♂ HM PIRELLI</b><br>PICARD x STAR P RDC x PROSPEROUS | <b>♀ 3STAR OH SANDRA PP RED</b><br>MEMBER PP RED x SORELIO P x RUBELS-RED |  |
| <b>THESE EMBRYOS ARE AVAILABLE THROUGH THE 3STAR EMBRYO PROGRAM. PLEASE <a href="#">CONTACT US</a> FOR MORE INFORMATION.</b>  |   |   |   |
| Flush from donor <b>3STAR OH Sandra PP Red</b> , a homozygous polled Member PP Red daughter with 152 gRZG.<br><br>Also striking are Sandra's high indexes for conformation with especially 129 EUT and 135 RZE! In addition, she brings enormous health traits and a plus in the milk.<br><br>Her dam Sunelio P Red has been a major influence on the breeding program. In doing so, she produces an enormous amount of milk. Granddam Sunnyside Red is known as the former number 1 gTPI Red & White in Europe. This Des-Y-Gen Planet Silk RDC EX-90 family is a big producer bull dams! For example, an Ell Fashion P maternal-brother of this donor was sold to a German AI.<br><br>Deliver the next generation of bull dam through our EmbryoProgram!<br><br>Top 10 gRZG bull <b>HM Pirelli</b> brings +162 gRZG, high longevity, lots of milk and is a big feet & leg improver with 132 FUN. He traces via Prinzessin VG-88 back to Golden-Oaks Mark Prudence.<br><br><i>The embryos are stored in Netherlands. These embryos sell with a GenHotel bullcontract.</i> |   |   |   |
| <b>Price on request</b>   |   |   |   |

## 3STAR OH SANDRA PP RED NL 584822229 DOB 06-09-2023



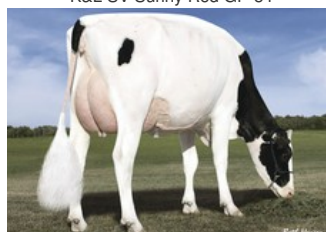
3STAR OH Sunnyside Red



K&L SV Sunny Red GP-84



Dymentholm Sunview Sunday VG-87



Des-Y-Gen Planet Silk EX-90



Gen-I-Beq Goldwyn Secret RC VG-87

Member PP Red x GP-83 Sorelio P x Rubels-Red x GP-84 Salvatore Rc x Rubicon x GP-83 Cashcoin x VG-87 Snowman x EX-90 Planet x VG-85 Bolton x VG-87 Goldwyn

### GENOMICS

Genomic index DEU: **+152 GRZG** (2025-04)

|            |         |         |         |           |          |         |
|------------|---------|---------|---------|-----------|----------|---------|
| Production | 1034 M  | 0.12%F  | -0.01%P | 54 F      | 34 P     | 122 RZM |
| Health     | 137 RZN | 127 RZS | 107 RZR | 130 RZGes | 2247 RZ€ |         |
| Type       | 110 KÖR | 131 MTY | 127 EUT | 110 FUN   | 135 RZE  |         |

Genomic index NLD: **+217 GNVI** (2025-04; R&W)

|            |         |         |         |         |         |          |
|------------|---------|---------|---------|---------|---------|----------|
| Production | 1364 M  | -0.26%F | -0.20%P | 35 F    | 29 P    | 230 INET |
| Health     | 981 LVD | 105 UGH | 107 CGT | 102 VRU |         |          |
| Type       | 103 FR  | 106 RB  | 111 UI  | 99 BE   | 107 TOT |          |

