

# LOT: 781 - 4 EMBRYOS DELTA BORAX-RED X WW HAZEL

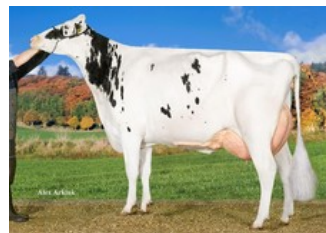
<b>LOT: 781</b>	<b>4 EMBRYOS DELTA BORAX-RED X WW HAZEL</b>	
<b>4 embryos</b>	<b>♂ DELTA BORAX-RED</b> FREESTYLE RED x JAKARTA-R x BRAM 154	<b>♀ WW HAZEL</b> SUNRISE x COPYRIGHT x BENZ
<p><b>WW Hazel BB/A2A2</b> is a Sunrise daughter with a sky-high 304 gNVI, 151 gRZG and 2811 gTPI! She goes via Anderstrup Shottle Heidi VG-89 (by Shottle) back to Lar-Lin Glendell Haiti EX-93 and was contracted by German Als after her being sold during the Top-Genetik Auction!</p> <p>Dam History, a GP-84 History daughter, bred a full brother of Hazel who left for AI, namely WW Surfer @OHG. The enormous production potential of this cow family goes hand in hand with a deep pedigree that contains at least 11 generations of VG/EX in a row and has the potential to expand it.</p> <p>Anderstrup Snow Heaven VG-87 is a widely used bull dam in Europe and has sold bulls such as Cinema (former no. 1 genomic gRZG bull), Chrysler and Anderstrup Heavey. Popular proven bulls Anderstrup Baroy &amp; Anderstrup German Boy also originate from this cow family. Hazel herself is formed with a lot of milk (2431 kgM &amp; 161 gRZM), top health traits with positive fertility (105) and good functionality traits.</p> <p>Flushed to conv. <b>Delta Borax-Red</b> / 156 gRZG/345 gNVI/2748 gTPI. Strong all-round sire from the Dutch Liesje cow family.</p> <p><i>The embryos are stored in Netherlands.</i></p>		
<b>Current price: Not logged in</b>		



**WW HAZEL** DE 363684465 DOB 09-07-2022



History



Anderstrup Snow Heaven VG-87



Anderstrup Shottle Heidi VG-89



Darlawn Marshell Heaven VG-86



Darlawn Mtoto Honibea VG-85

Sunrise x VG-85 Copyright x GP-84 Benz x GP-84 Lighter x VG-86 Boss x VG-87 Snowman x VG-89 Shottle x VG-87 Boliver x VG-86 BW Marshall x VG-85 Mtoto

## GENOMICS

Genomic index DEU: **+151 GRZG** (2024-04)

Production	2411 M	0.05%F	-0.09%P	102 F	71 P	159 RZM
Health	109 RZN	115 RZS	95 RZR	116 RZGes	2355 RZ€	
Type	107 KÖR	116 MTY	105 EUT	103 FUN	112 RZE	

Genomic index USA: **+2811 GTPi** (2024-04)

Production	1957 M	0.08%F	0.00%P	98 F	61 P	930 NM
Health	+3.3 PL	2.71 SCS	-3.8 DPR			
Type	1.20 UDC	0.08 F&L	0.81 PTAT			

Genomic index NLD: **+304 GNVI** (2024-04; B&W)

Production	3045 M	-0.14%F	-0.19%P	113 F	83 P	601 INET
Health	499 LVD	105 UGH	106 CGT	99 VRU		
Type	101 FR	102 RB	104 UI	94 BE	100 TOT	

