




LOT: 780 - 3 EMBRYOS WIL MONTAGUE X WW HAZEL

LOT: 780	3 EMBRYOS WIL MONTAGUE X WW HAZEL		
3 embryos	♂ WIL MONTAGUE MONTEVERDI x HONDA x MODESTY	♀ WW HAZEL SUNRISE x COPYRIGHT x BENZ	

Donor has been flushed with **WIL Montague A2A2** (Monteverdi x Honda). A 154 gRZG top transmitter from the cow family of **Ralma Juror Faith EX-91** with 125 gRZN, 120 gRZR, 120 gRZGes and 127 gRZE (129 Hintereuter)!

WW Hazel BB/A2A2 is a Sunrise daughter with a sky-high 304 gNVI, 151 gRZG and 2811 gTPI! She goes via **Anderstrup Shottle Heidi VG-89** (by Shottle) back to **Lar-Lin Glendell Haiti EX-93** and was contracted by German Als after her being sold during the **Top-Genetik Auction!**

Dam History, a GP-84 History daughter, bred a full brother of Hazel who left for AI, namely **WW Surfer @OHG**. The enormous production potential of this cow family goes hand in hand with a deep pedigree that contains at least 11 generations of VG/EX in a row and has the potential to expand it.

Anderstrup Snow Heaven VG-87 is a widely used bull dam in Europe and has sold bulls such as **Cinema** (former no. 1 genomic gRZG bull), **Chrysler** and **Anderstrup Heavey**. Popular proven bulls **Anderstrup Baroy** & **Anderstrup German Boy** also originate from this cow family. Hazel herself is formed with a lot of milk (2431 kgM & 161 gRZM), top health traits with positive fertility (105) and good functionality traits.

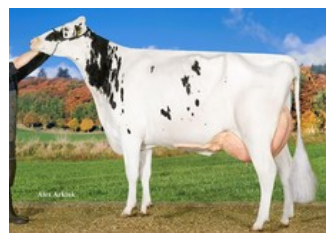
The embryos are stored in Netherlands.

Current price: Not logged in

WW HAZEL DE 363684465 DOB 09-07-2022



History



Anderstrup Snow Heaven VG-87



Anderstrup Shottle Heidi VG-89



Darlawn Marshell Heaven VG-86



Darlawn Mtoto Honibea VG-85

Sunrise x VG-85 Copyright x GP-84 Benz x GP-84 Lighter x VG-86 Boss x VG-87 Snowman x VG-89 Shottle x VG-87 Boliver x VG-86 BW Marshall x VG-85 Mtoto

GENOMICS

Genomic index DEU: **+151 GRZG** (2024-04)

Production	2411 M	0.05%F	-0.09%P	102 F	71 P	159 RZM
Health	109 RZN	115 RZS	95 RZR	116 RZGes	2355 RZ€	
Type	107 KÖR	116 MTY	105 EUT	103 FUN	112 RZE	

Genomic index USA: **+2811 GTPI** (2024-04)

Production	1957 M	0.08%F	0.00%P	98 F	61 P	930 NM
Health	+3.3 PL	2.71 SCS	-3.8 DPR			
Type	1.20 UDC	0.08 F&L	0.81 PTAT			

Genomic index NLD: **+304 GNVI** (2024-04; B&W)

Production	3045 M	-0.14%F	-0.19%P	113 F	83 P	601 INET
Health	499 LVD	105 UGH	106 CGT	99 VRU		
Type	101 FR	102 RB	104 UI	94 BE	100 TOT	

