



LOT: 686 - 4 EMBRYOS RED ROCKS MASK RED [SEXED] X DE W

LOT: 686	4 EMBRYOS RED ROCKS MASK RED [SEXED] X DE WIJDE BLIK ROSEANNE RED 2	
4 embryos	♂ RED ROCKS MASK RED STAMKOS RDC x WISENT RDC x SUNFISH	♀ DE WIJDE BLIK ROSEANNE RED 2 FREESTYLE-RED x SWINGMAN RED x RUBICON

Impressive Poppe Freestyle-Red with 151 gRZG from a phenomenal cow family!

This niece of the 'Global Red Impact Cow of the Year 2021' produces several sexed embryos and are now up for sale! Her dam classifies VG-85 (VG-87 MS) 2-yr-old. Quatropoint K&L SW Roseanne Red VG-85 is fresh in 2nd lactation since January 2023 and will produce 9975kgM with 4,55%F & 3,66%P in 305-days.

This R&W branch of the prominent brood cow Golden-Oaks Mark Prudence EX-95 ranks high in many systems. Granddam De Oosterhof Dg Rose RDC VG-89 already has more than 65 offspring and is dam of several top AI bulls, including Sudena Safari Red & Sudena Roderick. Rose RDC is also, via Lakeside Ups Red Range VG-86, the granddam of 3STAR OH Ranger Red, which is 3 proof runs in a row the number 1 gLPI young sire globally!

With great total scores in multiple systems, the Freestyle also shows 125 gRZN and 131 gRZGes with an irresistible 143 EUT and a whopping 139 gRZE on a German basis! In Switzerland, this Roseanne Red 2 breaks through with 1491 gISET, 133 ZZ, 126 IPL, 132 IFF, 127 ITP & 127 EUT!

Flushed to Westcoast Stamkos RDC son **Red Rocks Mask Red SEXED** (BB + A2A2)! An outcross bull with A2A2, 155 gRZG, big will for milk with positive components and top conformation!

The embryos are stored in Netherlands.

Current price: Not logged in



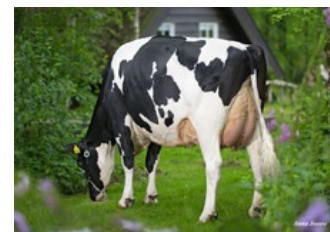
DE WIJDE BLIK ROSEANNE RED 2 NL 596960283 DOB 01-12-2021



De Wijde Blick Roseanne Red 2



Quatropoint K&L SW Roseanne VG-85



De Oosterhof Dg Rose RDC VG-89



Holbra Mascol Pam VG-87



Holbra Manoa VG-85

Freestyle-Red x VG-85 Swingman Red x VG-89 Rubicon x GP-83 Aikman RDC x VG-85 Man-O-Man x VG-87 Mascol x VG-88 Durham x EX-90 Rudolph x EX-95 Chief Mark x EX-91 Sexation

GENOMICS

Genomic index DEU: **+151 GRZG** (2023-08)

Production	537 M	0.16%F	0.02%P	38 F	21 P	119 RZM
Health	125 RZN	131 RZS	107 RZR	133 RZGes	1801 RZ€	
Type	109 KÖR	109 MTY	143 EUT	107 FUN	139 RZE	

Genomic index NLD: **+232 GNV** (2023-08; R&W)

Production	1095 M	-0.01%F	-0.18%P	48 F	23 P	211 INET
Health	403 LVD	105 UGH	110 CGT	106 VRU		
Type	96 FR	105 RB	116 UI	100 BE	108 TOT	

