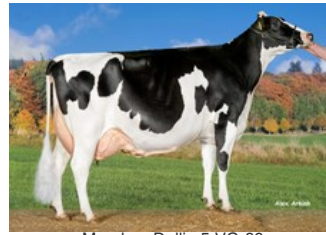




Van de Peelsehoeve Dellia 12 GP-84



Manders Dellia 5 VG-89



Manders Dellia 1 VG-87



Southland Dellia 2 VG-88



Double Dutch Southland Belle VG-88

GP-84 Galaxy x VG-89 Man-O-Man x VG-87 Goldwyn x GP-84 Shottle x EX-90 Adam x VG-88 Lucky Leo x VG-86 Largo x VG-88 Jabot x VG-87 Southwind x VG-85 Chairman

Hoge GNVI Galaxy uit de Manders

Zeer hoge gezondheidskenmerken

Super uiers en beenwerk

GENOMICS

Genomic index DEU: **+96 GRZG** (2024-04)

Productie	256 M	-0.22%V	-0.06%E	-13 V	2 E	98 RZM
Gezondheid	95 RZN	107 RZS	98 RZR	97 RZGes	-319 RZ€	
Exterieur	103 KÖR	100 MTY	96 EUT	116 FUN	107 RZE	

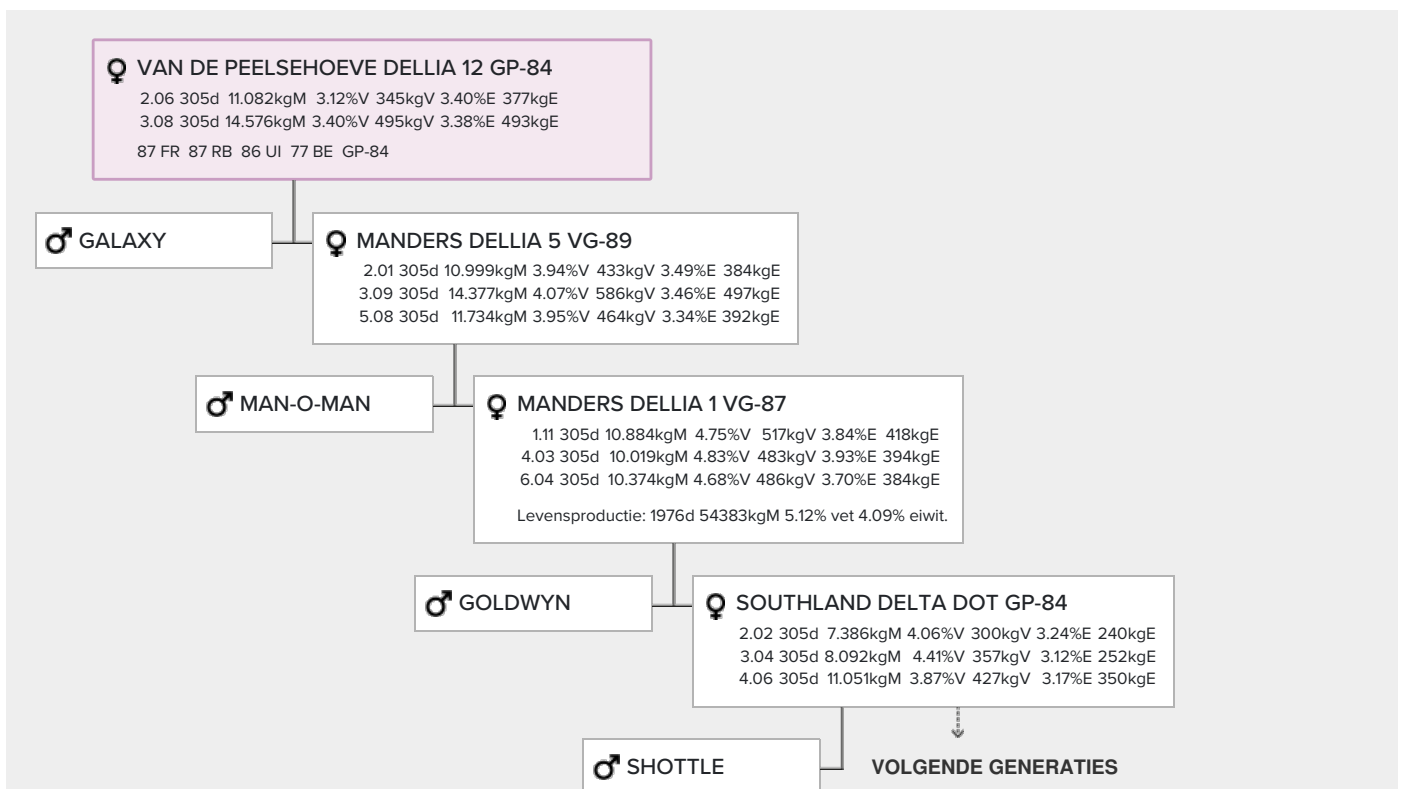
Genomic index USA: **+1954 GTPI** (2024-04)

Productie	427 M	-0.10%V	0.01%E	-13 V	17 E	-66 NM
Gezondheid	-0.8 PL	2.91 SCS	-1.6 DPR			
Exterieur	0.22 UDC	0.51 F&L	0.46 PTAT			

Genomic index NLD: **+221 GNVI** (2016-04; ZB)

Productie	982 M	-0.22%V	-0.10%E	21 V	25 E	160 INET
Gezondheid	506 LVD	108 UGH	109 CGT	100 VRU		
Exterieur	102 FR	107 RB	108 UI	106 BE	109 TOT	

AFSTAMMING



- **Southland Dellia 44 EX-90 (v. Adam)**
- **Southland Dellia 2 VG-88 (v. Lucky Leo)**
- **Southland Belle 3 VG-86 (v. Largo)**
- **Double Dutch Southland Belle VG-88 (v. Jabot)**
- **Double Dutch Southwind Betsy VG-87 (v. Southwind)**
- **Dix-Jim Chairman Bess B C VG-85 (v. Chairman)**