



De Oosterhof Dg Rose RDC VG-89



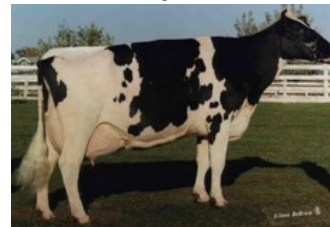
De Oosterhof Dg Rose RDC VG-89



De Oosterhof Dg Rose RDC VG-89



Holbra Mascol Pam VG-87



Golden-Oaks Mark Prudence EX-95

Mask Red x Freestyle-Red x GP-83 Andy-Red x GP-82 Apprentice RDC x VG-89 Rubicon x GP-83 Aikman RDC x VG-85 Man-O-Man x VG-87 Mascol x VG-88 Durham x EX-90 Rudolph

GENOMICS

Genomic index NLD: +394 GNV (2024-04; RB)

|            |         |         |         |         |         |          |
|------------|---------|---------|---------|---------|---------|----------|
| Productie  | 2700 M  | -0.50%V | -0.12%E | 66 V    | 84 E    | 521 INET |
| Gezondheid | 941 LVD | 112 UGH | 112 CGT | 102 VRU |         |          |
| Exterieur  | 98 FR   | 100 RB  | 104 UI  | 101 BE  | 102 TOT |          |

AFSTAMMING

