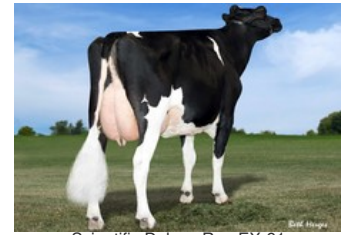




Kemelia V/H Zomerbloemhof VG-87



Co-Vista Atwood Desire EX-90



Scientific Deluxe Rae EX-91



Scientific Debutante Rae EX-92



C Glenridge Citation Roxy EX-97

German Boy x VG-89 Topnotch x VG-89 Legendary x VG-87 Rubicon x Numero Uno x EX-90 Atwood x EX-91 Shottle x EX-92 Durham x EX-90 Jubilant RF x EX-96 Tony

GENOMICS

Genomic index DEU: **+139 GRZG** (2024-04)

| | | | | | | |
|------------|---------|---------|---------|-----------|----------|---------|
| Productie | 784 M | 0.29%V | -0.06%E | 63 V | 20 E | 125 RZM |
| Gezondheid | 119 RZN | 125 RZS | 109 RZR | 114 RZGes | 1531 RZ€ | |
| Exterieur | 106 KÖR | 112 MTY | 122 EUT | 114 FUN | 127 RZE | |

Genomic index USA: **+2694 GTPI** (2024-04)

| | | | | | | |
|------------|----------|----------|-----------|------|------|--------|
| Productie | 925 M | 0.16%V | 0.01%E | 82 V | 32 E | 677 NM |
| Gezondheid | +4.1 PL | 2.67 SCS | -0.6 DPR | | | |
| Exterieur | 1.11 UDC | 0.62 F&L | 0.91 PTAT | | | |

Genomic index NLD: **+239 GNV** (2023-08; ZB)

| | | | | | | |
|------------|---------|---------|---------|---------|---------|----------|
| Productie | 1713 M | 0.15%V | -0.21%E | 89 V | 37 E | 364 INET |
| Gezondheid | 337 LVD | 103 UGH | 109 CGT | 105 VRU | | |
| Exterieur | 100 FR | 102 RB | 104 UI | 98 BE | 101 TOT | |

AFSTAMMING

