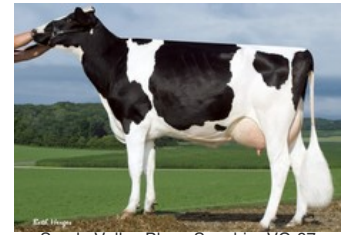




Alida ET VG-86



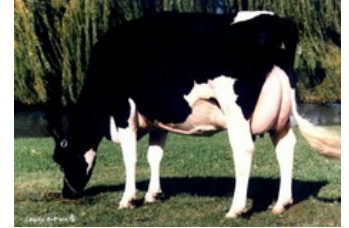
Sandy-Valley IO Amethyst VG-87



Sandy-Valley Plane Sapphire VG-87



Sandy-Valley Bolt Sheila EX-92



Snow-N Denises Dellia EX-95

Dayne x Bali x VG-86 Gymnast x VG-86 Supershot x VG-85 McCutchen x VG-87 Altalota x VG-87 Planet x EX-92 Bolton x VG-87 Forbidden x VG-89 BW Marshall

► By far the no. 1 daughter of the American top sire Peak Dayne.

► High components combined with great health traits and A2A2!

► Dam SPH Alberta is still the no. 1 daughter of De-Su Legend Bali and was topseller at the Zukunft Rind 2020 at € 21.000.

GENOMICS

Genomic index DEU: **+148 GRZG** (2024-04)

Productie	363 M	0.44%V	0.24%E	61 V	38 E	133 RZM
Gezondheid	125 RZN	116 RZS	113 RZR	120 RZGes	2046 RZ€	
Exterieur	113 KÖR	100 MTY	113 EUT	104 FUN	116 RZE	

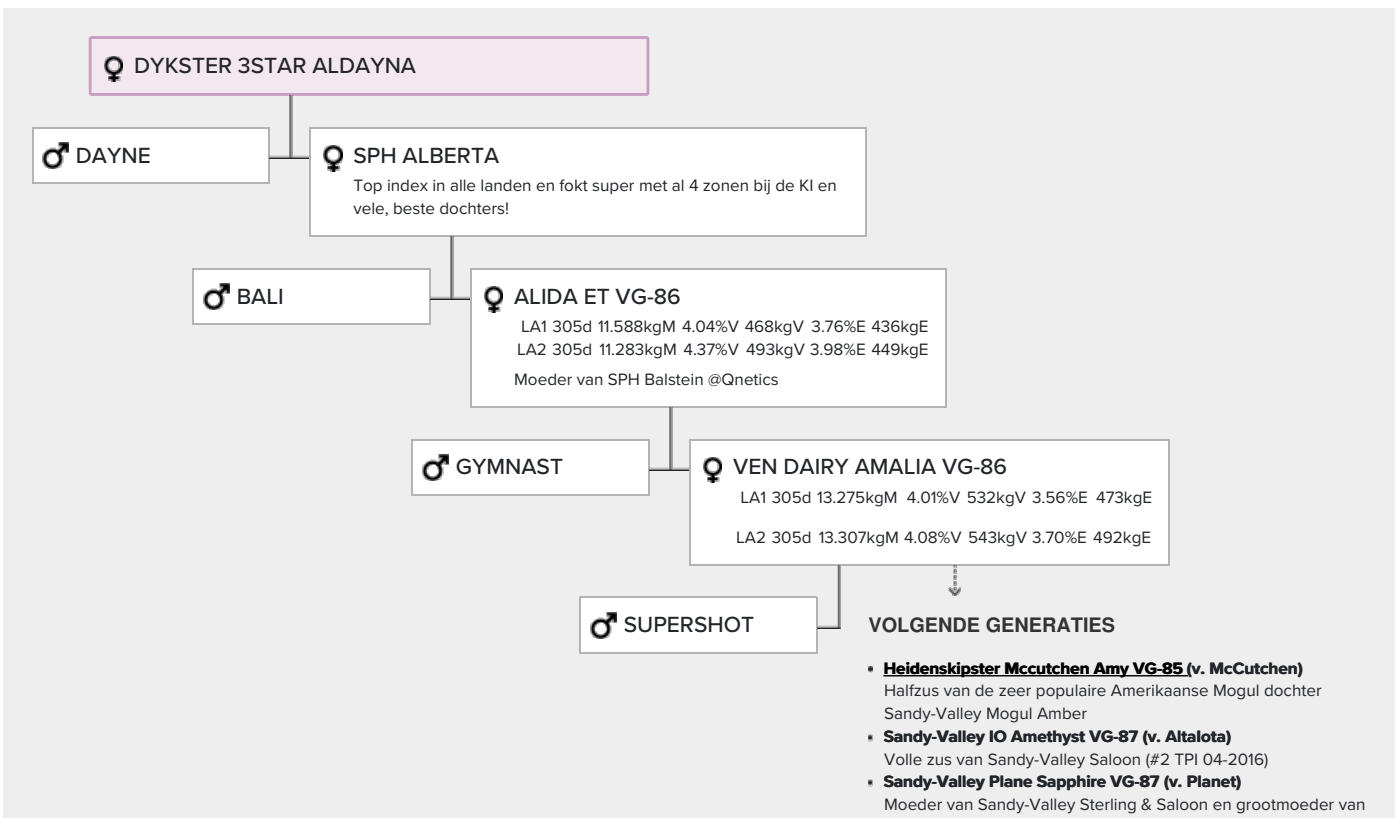
Genomic index USA: **+2808 GTPI** (2024-04)

Productie	585 M	0.18%V	0.11%E	74 V	51 E	838 NM
Gezondheid	+5.2 PL	2.68 SCS	+0.1 DPR			
Exterieur	0.98 UDC	0.60 F&L	0.77 PTAT			

Genomic index NLD: **+283 GNVI** (2022-04; ZB)

Productie	1087 M	0.32%V	0.24%E	78 V	62 E	432 INET
Gezondheid	576 LVD	103 UGH	110 CGT	104 VRU		
Exterieur	102 FR	102 RB	109 UI	100 BE	106 TOT	

AFSTAMMING



EDG Rubicon Meest prominente stammoeder in de Amerikaanse top 200 gTPI stierenlijst van 4-2023

- **Sandy-Valley Bolt Sheila EX-92 (v. Bolton)**
- **Sandy-Valley Forbid Sully VG-87 (v. Forbidden)**
- **Orthoapple Marshall Alia VG-89 (v. BW Marshall)**