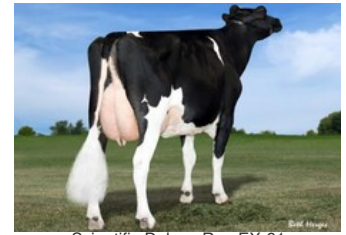




Kemelia V/H Zomerbloemhof VG-87



Co-Vista Atwood Desire EX-90



Scientific Deluxe Rae EX-91



Hanoverhill Tony Rae EX-96



C Glenridge Citation Roxy EX-97

Bennie x VG-89 Topnotch x VG-89 Legendary x VG-87 Rubicon x Numero Uno x EX-90 Atwood x EX-91 Shottle x EX-92 Durham x EX-90 Jubilant RF x EX-96 Tony

GENOMICS

Genomic index DEU: **+148 GRZG** (2024-04)

Productie	2127 M	-0.07%V	-0.13%E	76 V	56 E	145 RZM
Gezondheid	116 RZN	109 RZS	106 RZR	114 RZGes	2126 RZE	
Exterieur	108 KÖR	120 MTY	109 EUT	109 FUN	119 RZE	

Genomic index USA: **+2847 GTPI** (2024-04)

Productie	1934 M	0.01%V	0.00%E	78 V	61 E	907 NM
Gezondheid	+6.0 PL	2.78 SCS	-1.4 DPR			
Exterieur	1.37 UDC	0.03 F&L	1.28 PTAT			

Genomic index NLD: **+248 GNV** (2024-04; ZB)

Productie	2287 M	-0.31%V	-0.23%E	62 V	54 E	370 INET
Gezondheid	517 LVD	104 UGH	104 CGT	103 VRU		
Exterieur	100 FR	104 RB	108 UI	99 BE	104 TOT	

AFSTAMMING

