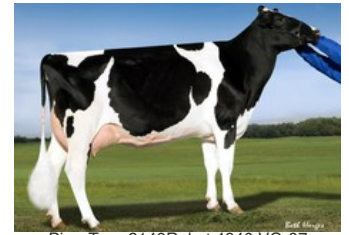




View-Home Mcc Found VG-88



View-Home Mcc Found VG-88



Pine-Tree 2149Robst 4846 VG-87



Pine-Tree Missy Miranda VG-86



Wesswood-HC Rudy Missy EX-92

VG-86 Dynamo x VG-87 Gatedancer x VG-85 Silver x VG-88 McCutchen x VG-87 Robust x VG-87 Zenith x VG-86 Shottle x VG-86 O Man x EX-92 Rudolph x EX-90 Bell Elton

- Bekende Wesswood-HC Rudy Missy EX-92 familie

GENOMICS

Genomic index DEU: **+132 GRZG** (2024-04)

Productie	862 M	0.22%V	0.00%E	58 V	29 E	128 RZM
Gezondheid	111 RZN	105 RZS	102 RZR	109 RZGes	1387 RZ€	
Exterieur	109 KÖR	109 MTY	110 EUT	103 FUN	113 RZE	

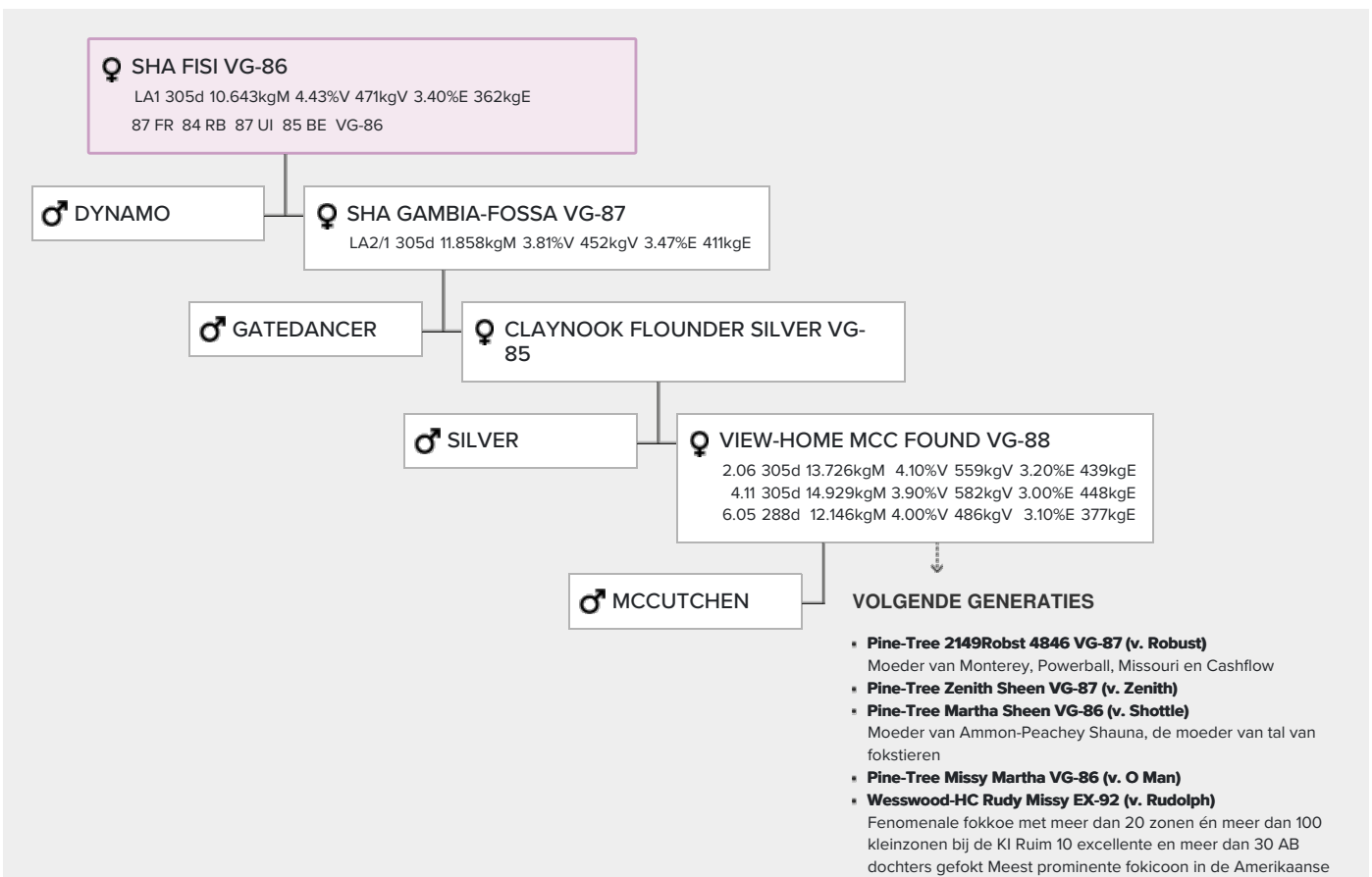
Genomic index USA: **+2764 GTPi** (2024-04)

Productie	1487 M	0.04%V	0.03%E	68 V	54 E	808 NM
Gezondheid	+4.0 PL	2.89 SCS	-1.8 DPR			
Exterieur	1.72 UDC	0.54 F&L	1.12 PTAT			

Genomic index NLD: **+240 GNVi** (2022-04; ZB)

Productie	1903 M	-0.08%V	-0.08%E	72 V	58 E	415 INET
Gezondheid	406 LVD	102 UGH	109 CGT	103 VRU		
Exterieur	98 FR	101 RB	106 UI	101 BE	103 TOT	

AFSTAMMING



top-100 TPI stierenlijst van 4-2023 Grondlegger van onder meer  
Seagull Bay Supersire, Silver, Sargeant, Headliner, Platinum,  
Monterey, Balisto, Powerball en Missouri

- **Wesswood Elton Mimi EX-90 (v. Bell Elton)**