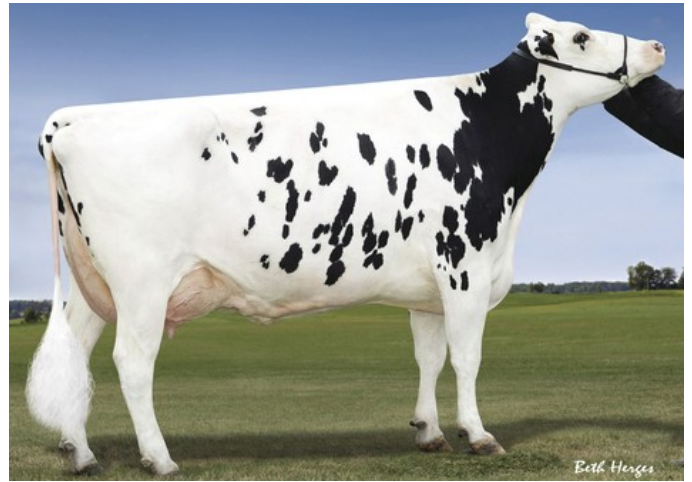




KNS Georgia-P GP-84



De-Su 7012 EX-92

GP-84 Powerball-P x Balisto x GP-80 Gonzo x EX-92 Shottle x GP-82 O Man x EX-90 BW Marshall x EX-90 Patron x VG-87 Leadman x VG-86 Secret x EX-91 Tony

Top GRZG & Polled from the De-Su BW Marshal Georgia family

Marshal Georgia is the dam to the proven bull De-Su Oman Goli

The 4th dam to Georgia-P is the famous Shottle daughter De-Su 7012

GENOMICS

Genomic index DEU: **+109 GRZG (2024-04)**

Production	-275 M	0.23%F	0.19%P	12 F	10 P	108 RZM
Health	108 RZN	100 RZS	101 RZR	105 RZGes	538 RZE	
Type	92 KÖR	100 MTY	101 EUT	93 FUN	95 RZE	

Genomic index USA: **+2349 GTPI (2024-04)**

Production	735 M	0.07%F	0.04%P	49 F	33 P	482 NM
Health	+1.4 PL	2.90 SCS	-1.4 DPR			
Type	0.28 UDC	-0.14 F&L	-0.06 PTAT			

PEDIGREE

