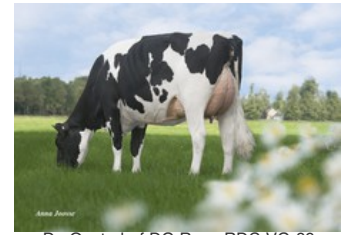




Koepon Date Range 10 RDC GP-84



Lakeside Ups Red Range VG-86



De Oosterhof DG Rose RDC VG-89



Holbra Mascol Pam VG-87



Golden-Oaks Mark Prudence EX-95

Tricky Red x Gameday x GP-84 AltaDateline x VG-86 Salvatore Rc x VG-89 Rubicon x GP-83 Aikman RDC x VG-85 Man-O-Man x VG-87 Mascol x VG-88 Durham x EX-90 Rudolph

Top gTPI R&W female of Europe

GENOMICS

Genomic index DEU: **+149 GRZG** (2024-04)

Production	1691 M	0.33%F	0.04%P	105 F	62 P	155 RZM
Health	110 RZN	111 RZS	110 RZR	112 RZGes	2322 RZ€	
Type	115 KÖR	111 MTY	114 EUT	86 FUN	111 RZE	

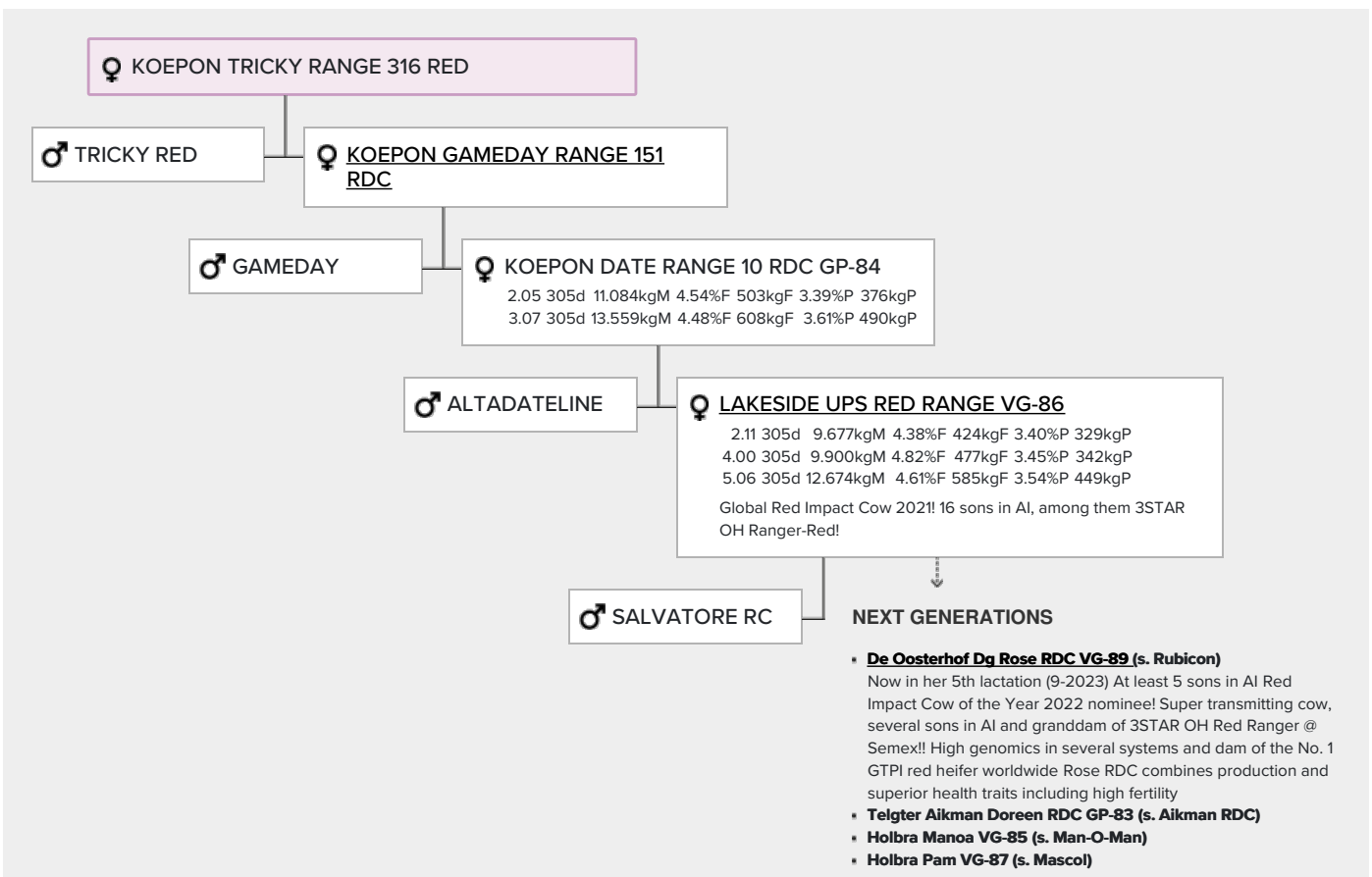
Genomic index USA: **+2961 GTPI** (2024-04)

Production	1659 M	0.14%F	0.05%P	104 F	66 P	961 NM
Health	+3.6 PL	2.75 SCS	-0.7 DPR			
Type	1.80 UDC	-0.45 F&L	1.44 PTAT			

Genomic index NLD: **+257 GNVI** (2024-04; R&W)

Production	2138 M	0.08%F	-0.07%P	104 F	70 P	536 INET
Health	324 LVD	101 UGH	105 CGT	104 VRU		
Type	101 FR	102 RB	109 UI	91 BE	101 TOT	

PEDIGREE



Lifetime: 2062d 73.468kgM 4.46%F 3274kgF 3.57%P 2620kgP

- **Sunday ALH Prudence VG-88 (s. Durham)**
- **Mayerlane-DK Hiawatha EX-90 (s. Rudolph)**