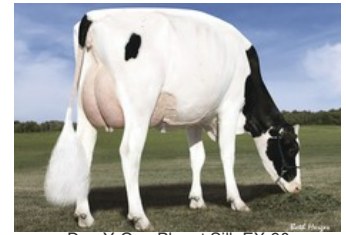




K&L SV Sunny Red GP-84



Dymenthalm Sunview Sunday VG-87



Des-Y-Gen Planet Silk EX-90



Gen-I-Beq Goldwyn Secret RC VG-87



Glen Drummond Splendor VG-86

Tricky Red x Star P RDC x Rubels-Red x GP-84 Salvatore Rc x Rubicon x GP-83 Cashcoin x VG-87 Snowman x EX-90 Planet x VG-85 Bolton x VG-87 Goldwyn

GENOMICS

Genomic index DEU: **+153 GRZG** (2024-04)

Production	1817 M	0.10%F	0.02%P	85 F	65 P	152 RZM
Health	119 RZN	110 RZS	103 RZR	113 RZGes	2367 RZE	
Type	111 KÖR	117 MTY	110 EUT	111 FUN	122 RZE	

Genomic index USA: **+2995 GTPI** (2024-04)

Production	1907 M	0.03%F	0.04%P	82 F	72 P	973 NM
Health	+6.1 PL	2.74 SCS	-0.4 DPR			
Type	1.39 UDC	0.79 F&L	2.18 PTAT			

PEDIGREE

