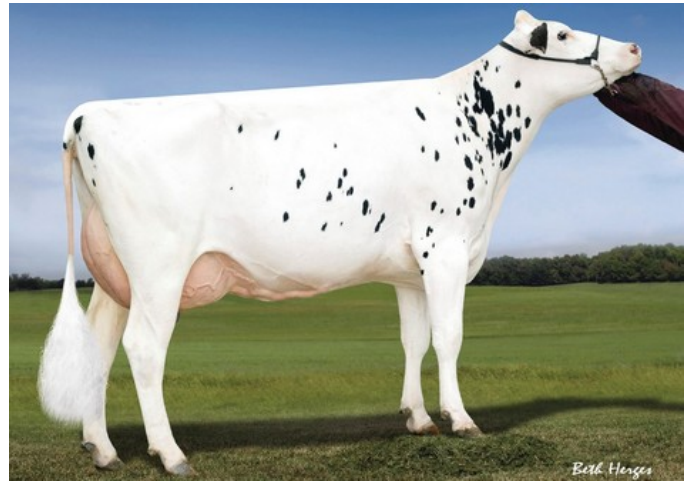




CNN H. Liner Lillie VG-85



Richmond-FD Lorelei EX-90

VG-86 Josuper x G-79 Charley x Silver x VG-85 Headliner x EX-90 Shot AI x EX-90 Ramos x VG-86 O Man x VG-87 BW Marshall x EX-93 Lord Lily x VG-86 Bellwood

GENOMICS

Genomic index USA: **+2502 GTPI** (2024-04)

Production	1977 M	-0.02%F	-0.01%P	70 F	57 P	530 NM
Health	+0.3 PL	3.02 SCS	-4.2 DPR			
Type	0.83 UDC	-0.16 F&L	1.02 PTAT			

Genomic index NLD: **+190 GNVI** (2021-02; B&W)

Production	2193 M	-0.20%F	-0.15%P	71 F	60 P	425 INET
Health	262 LVD	100 UGH	103 CGT	99 VRU		
Type	104 FR	103 RB	105 UI	98 BE	103 TOT	

PEDIGREE

