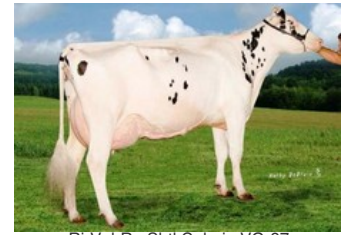




Verhages Bos Candlelight P Red VG-86



K&L BL Candle P RDC



Ri-Val-Re Shtl Calarie VG-87



S-F-L Enhancer Scarlett-Red VG-89



Stookey Fgn Scarlet-Red EX-94

GP-83 Euclid x Balisto x VG-86 Lawn Boy P-Red x VG-87 Shottle x VG-87 Marmax x VG-86 Patron x VG-87 Aerostar x VG-89 Enhancer x EX-94 Fagin x EX-95 Crystan

High GTPI + RZG polled granddaughter of Verhages Bos Candlelight P Red

Her dam is a Balisto sister to Schreur Apoll P Red

Allround genomics on both German and US basis

GENOMICS

Genomic index DEU: **+124 GRZG** (2024-04)

Production	-134 M	0.32%F	0.09%P	27 F	4 P	108 RZM
Health	117 RZN	111 RZS	108 RZR	116 RZGes	1009 RZE	
Type	109 KÖR	114 MTY	110 EUT	96 FUN	112 RZE	

Genomic index USA: **+2553 GTPI** (2024-04)

Production	349 M	0.09%F	0.05%P	39 F	25 P	493 NM
Health	+5.0 PL	2.71 SCS	+0.2 DPR			
Type	1.33 UDC	0.24 F&L	1.25 PTAT			

PEDIGREE

