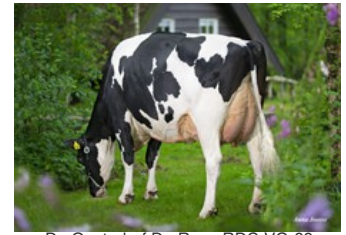




Koepon Tricky Range 294 Red



Lakeside Ups Red Range VG-86



De Oosterhof Dg Rose RDC VG-89



De Oosterhof Dg Rose RDC VG-89



Holbra Mascol Pam VG-87

Tricky Red x Parfect x VG-87 Mark RDC x VG-86 Salvatore Rc x VG-89 Rubicon x GP-83 Aikman RDC x VG-85 Man-O-Man x VG-87 Mascol x VG-88 Durham x EX-90 Rudolph

Top 100 gNVI roodbont 4-2024!

GENOMICS

Genomic index DEU: **+148 GRZG** (2024-04)

Productie	1468 M	-0.02%V	-0.14%E	58 V	36 E	131 RZM
Gezondheid	126 RZN	114 RZS	111 RZR	119 RZGes	2127 RZ€	
Exterieur	99 KÖR	111 MTY	112 EUT	117 FUN	120 RZE	

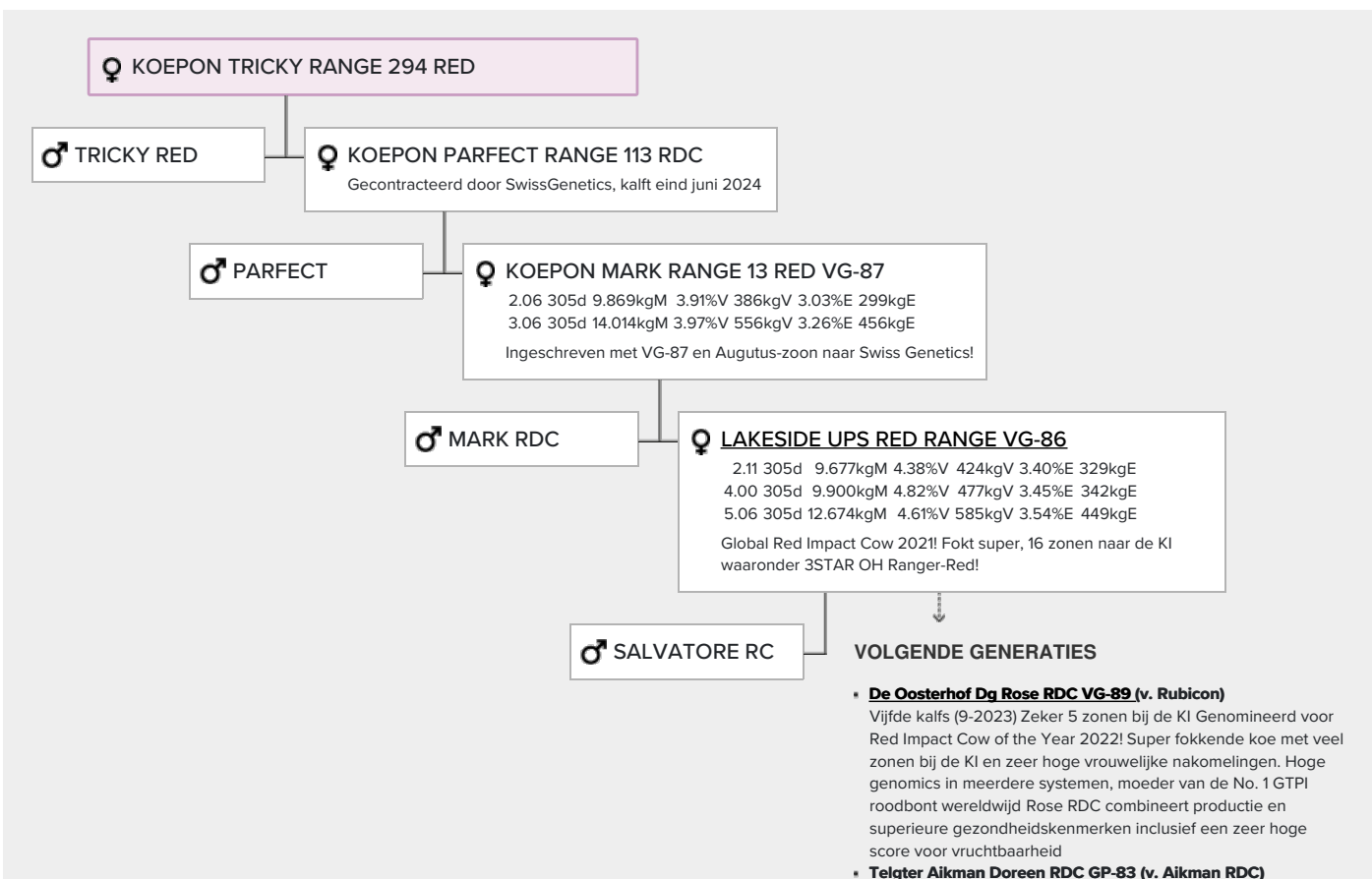
Genomic index USA: **+2872 GTPI** (2024-04)

Productie	1533 M	0.04%V	-0.01%E	70 V	46 E	879 NM
Gezondheid	+6.3 PL	2.78 SCS	+0.4 DPR			
Exterieur	1.74 UDC	1.12 F&L	1.75 PTAT			

Genomic index NLD: **+330 GNV** (2024-04; RB)

Productie	2281 M	-0.25%V	-0.28%E	76 V	53 E	407 INET
Gezondheid	1109 LVD	103 UGH	107 CGT	103 VRU		
Exterieur	97 FR	101 RB	109 UI	107 BE	108 TOT	

AFSTAMMING



- **Holbra Manoa VG-85 (v. Man-O-Man)**
- **Holbra Pam VG-87 (v. Mascol)**  
Lev.prod.: 2062d 73.468kgM 4.46%V 3274kgV 3.57%E 2620kgE
- **Sunday ALH Prudence VG-88 (v. Durham)**
- **Mayerlane-DK Hiawatha EX-90 (v. Rudolph)**