



Sandy-Valley Plane Sapphire VG-87



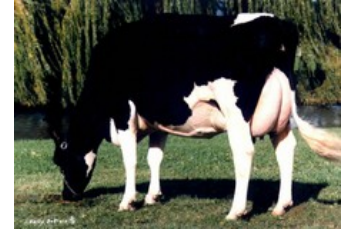
Sandy-Valley IO Amethyst VG-87



Alida ET VG-86



Sandy-Valley Bolt Sheila EX-92



Snow-N Denises Dellia EX-95

Soysauce x Gladius x Bali x VG-86 Gymnast x VG-86 Supershot x VG-85 McCutchen x VG-87 Altalota x VG-87 Planet x EX-92 Bolton x VG-87 Forbidden

- OCD Perfect Soysauce met indrukwekkend en compleet profiel! Echte allrounder met zeer hoog vet- en eiwit.
- Kan deze zomer gespoeld worden

GENOMICS

Genomic index DEU: **+152 GRZG** (2024-04)

|            |         |         |         |           |          |         |
|------------|---------|---------|---------|-----------|----------|---------|
| Productie  | 564 M   | 0.62%V  | 0.22%E  | 89 V      | 43 E     | 142 RZM |
| Gezondheid | 119 RZN | 110 RZS | 103 RZR | 122 RZGes | 2170 RZ€ |         |
| Exterieur  | 107 KÖR | 109 MTY | 104 EUT | 128 FUN   | 123 RZE  |         |

Genomic index USA: **+3020 GTPI** (2024-04)

|            |          |          |           |       |      |         |
|------------|----------|----------|-----------|-------|------|---------|
| Productie  | 1164 M   | 0.23%V   | 0.11%E    | 112 V | 67 E | 1073 NM |
| Gezondheid | +5.4 PL  | 2.81 SCS | -1.1 DPR  |       |      |         |
| Exterieur  | 1.11 UDC | 1.15 F&L | 1.33 PTAT |       |      |         |

Genomic index NLD: **+344 GNVI** (2024-04; ZB)

|            |         |         |         |         |         |          |
|------------|---------|---------|---------|---------|---------|----------|
| Productie  | 967 M   | 0.72%V  | 0.19%E  | 112 V   | 52 E    | 466 INET |
| Gezondheid | 701 LVD | 105 UGH | 105 CGT | 103 VRU |         |          |
| Exterieur  | 100 FR  | 103 RB  | 106 UI  | 104 BE  | 106 TOT |          |

AFSTAMMING

